



symbiosis

www.simedarbyproperty.com

How Life Should Be, Naturally

Pg.16

Pg.04 What Sustainability Means to Sime Darby Property

Pg.22 A Haven for Biodiversity Conservation

Pg.28 Preservation & Play

Vol.1 | Oct 2020



Scan to view
a digital copy

What's Inside

Definition of Symbiosis

A close and mutually beneficial relationship between different living organisms.

At Sime Darby Property, symbiosis defines our approach in ensuring that we continue to grow in harmony with nature, fulfilling the needs of today while preserving our heritage for future generations.



02
Foreword



03
Welcome
Note



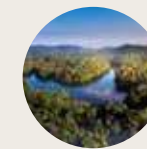
04
What Sustainability
Means to
Sime Darby Property



18
8 Pillars
of Wellness



20
Sharing Nature's
Treasures



22
A Haven for
Biodiversity
Conservation



06
Our
Journey



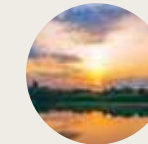
08
Awards &
Accolades



10
Sustainability
Achievements



24
Getting to
Know Nature



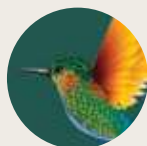
26
Rejuvenating
our Wetlands



28
Preservation
& Play



12
Achieving our
Shared Goals



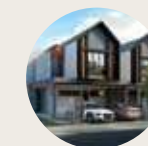
14
A Showcase
of Biodiversity



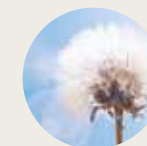
16
How Life Should Be,
Naturally



36
Veggies and
Herbs Galore



38
A Sustainable Home
for Generations



42
The Journey
Continues

Foreword



Dato' Azmir Merican
Group Managing Director, Sime Darby Property

Welcome to the inaugural issue of Symbiosis. **Through this publication, we hope to give you a glimpse of how best sustainability practices make lives more enriching at Sime Darby Property's award-winning township, the City of Elmina.**

Guided by our vision to be a "Leader in Building Sustainable Communities", we are committed to enhancing the lives we touch through our developments while positively impacting communities as well as the planet.

We at Sime Darby Property believe that the goal of sustainable development is to meet the needs of today, without compromising the needs of tomorrow. This is reflected in our long-term planning of developments to meet the future needs of the people, environment and Sime Darby Property.

Engaging conscious decisions in all our operational activities, we strive to deliver developments that will continue to grow sustainably and flourish for generations to come. This sustainable practice is evident in the City of Elmina masterplan, and is one that we aim to replicate in all future Sime Darby Property endeavours.

We take pride in knowing that our investments in sustainability will continue to enhance the quality of life for our communities not just today but also well into the future.

Welcome Note



Appollo Leong Yong Kuan
Senior General Manager, Business Unit 1

At Sime Darby Property, sustainability is more than just a buzzword. **It is an essential part of who we are as well as for our developments.**

This is clearly reflected in our City of Elmina township. From the way we designed the township masterplan to embrace the existing forests and waterways to the conservation of native flora and fauna, City of Elmina epitomises our vision of an idyllic living environment where people and nature thrive symbiotically. We hope that this publication not only gives you an insight into the sustainable way of life at City of Elmina, but also inspires you to join us in building a sustainable future.

We will continue to work hand-in-hand with dedicated partners such as UNICEF, Wetlands International, Tropical Rainforest Conservation & Research Centre (TRCRC), TNBX, as well as Sime Darby Property's own Main Infrastructure and Landscape team and the residents of the City of Elmina, to create a community that will grow sustainably for generations to come.

What Sustainability means to Sime Darby Property

We are committed to creating places that inspire and connect, where people and nature can thrive together in harmony for generations to come.

It's About Relationships

Drawing strength from Sime Darby Property's roots in agriculture, we understand that sustainability is an evolving cycle, and that sustainable growth can only be achieved when we work in symbiosis with nature.

It's about sowing a seed and nurturing it into a fruitful tree that provides sustenance for diverse ecosystems.

Guided by our vision to be a Leader in Building Sustainable Communities, we meticulously plan our townships so that nature can continue to flourish over time. We are committed to creating places that inspire and connect lives, where people and nature can thrive together.

Our Sustainability Pillars

Vision & Mission

- Leader in Building Sustainable Communities.
- To create a place that inspires, connects and lasts for generations to come.

People

Contributing to building a better society by promoting diversity and inclusion, prioritising safety and health, and celebrating different cultures.

Prosperity

Delivering sustainable values through superior product quality, inclusive designs, affordable homes and efficient supply chain management.

Planet

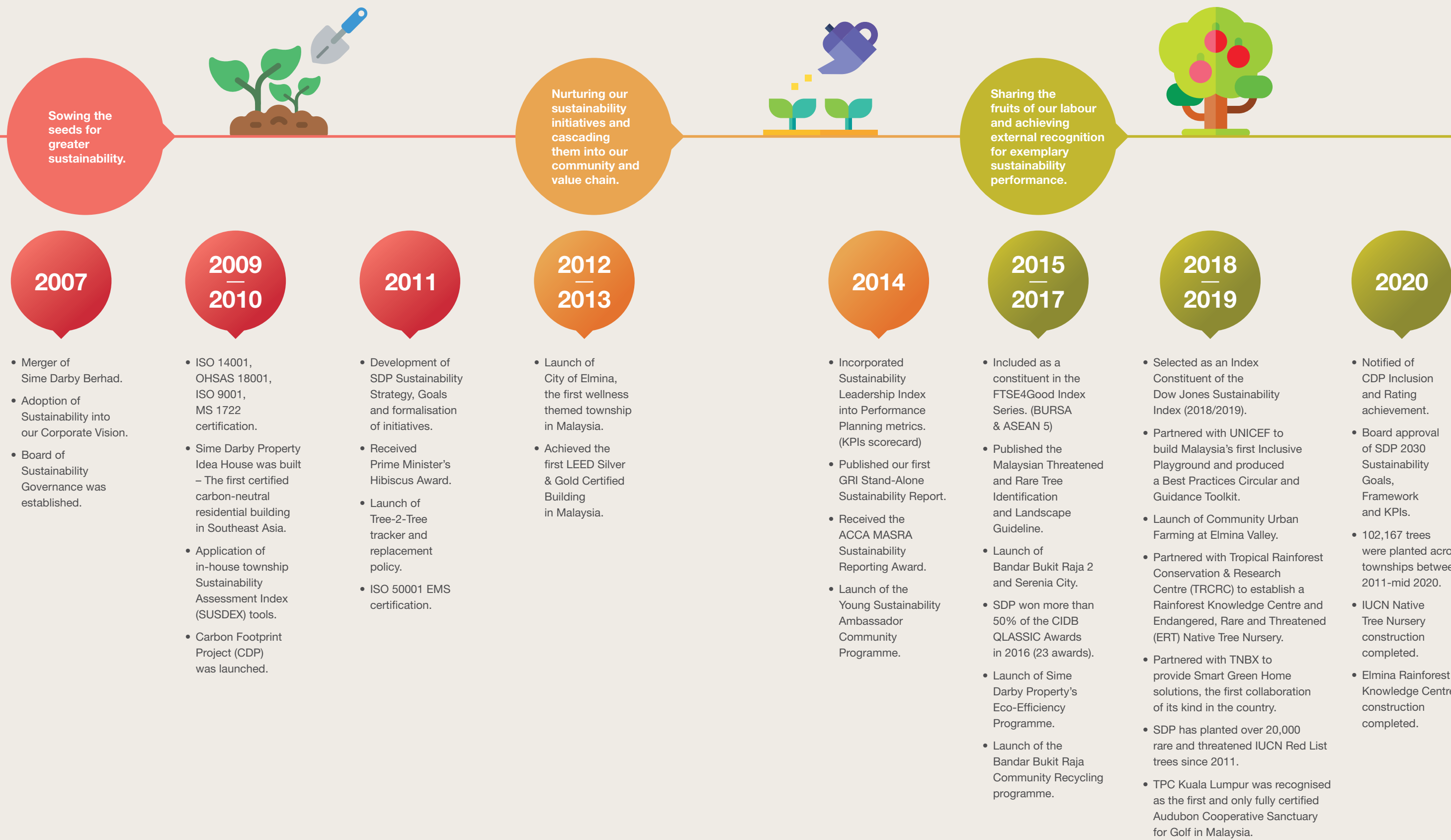
Optimising our environmental performance by minimising the impact from our operations and enhancing compliance with sustainability guidelines.

We take pride in knowing that our investments in sustainability will continue to enhance the quality of life for our communities not just today but also well into the future.

Dato' Azmir Merican
Group Managing Director,
Sime Darby Property

Our Journey

Sime Darby Property has made great strides in its journey towards creating sustainable communities. **As we continue to forge ahead, we remain committed to achieving new milestones and leading the way in implementing sustainability best practices.**



Awards & Accolades



2020

National Landscape Day

- Landscape Initiative by Developer

The StarProperty National Awards

- Best Overall Champion
- All Star Awards
Most Transparent Developer Category
- Excellence in the Neighbourhood Awards
- Best Comprehensive Township
Below 200 - 2,000 Acres Category
(Serenia City)

BCI Asia Top 10 Developers Awards in Malaysia

FIABCI World Prix d'Excellence Award

- Gold in Retail Category (Melawati Mall)

iProperty Development Excellence Awards (iDEA)

- Community CSR Award

ENR Global Best Projects Competition

- Best Project for Residential/Hospitality Category
(Cantara Residences)
- Merit for Retail/Mixed-Use Development Category
(The Ridge & KL East Mall)

Included as a constituent in the FTSE4Good Index Series (FTSE4Good BURSA, FTSE4Good Emerging Market and FTSE4Good Asean 5) by FTSE Russell for the third consecutive year

Malaysia Landscape Architecture Awards (MLAA)

- Excellence in Landscape Analysis and Study Awards Professional Category (Elmina Sport Park, Elmina East)
- Honour in Landscape Master Plan Awards Developer and GLC Category
- City of Elmina Master Plan, City of Elmina The Leaf Landscape Master Plan, Serenia City
- Honour in Landscape Analysis and Study Awards Professional Category (The Living Canal, Bandar Bukit Raja 2)

2019

The Edge Property Excellence Awards

- The Edge Top Property Developers Awards
- The Edge – PEPS Value Creation Excellence Award (Non-Residential Category)
Gateway 16 @Bandar Bukit Raja

Putra Brand Awards

- Gold Award in Property Category

BCI Asia Top 10 Developers Awards in Malaysia

The only Malaysian property developer to be selected as an index constituent of the Dow Jones Sustainability Index (DJSI) for the second consecutive year.

Malaysia Property Award

- Winner for Retail Category
(Melawati Mall)

iProperty Development Excellence Awards (iDEA)

- Special Recognition for Consumer Game Changer Award (dto)



DJSI
2018 & 2019 Constituent
Global Sustainability Index

DJSI Emerging Market Index
Dow Jones Sustainability Emerging Markets Index comprises emerging-market sustainability leaders as identified by RobecoSAM, a sustainability investment specialist. It aims to represent the top 10% of the largest companies globally, based on long-term economic, environmental and social criteria. Sime Darby Property has been a member of DJSI Emerging Market Index for two (2) consecutive years (2018 & 2019). This is a major milestone for Sime Darby Property as we are the only property industry player in Malaysia to be included in the index alongside other property companies from the Philippines, Thailand, South Africa and Chile.

NOTES:
1. Total carbon results subjected to PwC Assurance, March 2020.
2. Carbon emissions reduction monetary savings only includes reduced direct OPEX cost. Savings by third party construction contractors are estimated at RM2.7mil, largely from reduced diesel use.



**FTSE4Good Bursa
FTSE4Good
Emerging Market
FTSE4Good
Asean 5**
2018, 2019 & 2020
Constituent
*Global Sustainability
Indexes*



CDP Inclusion
2019 Rating-C
*Global Carbon
& Environmental
Disclosure &
Rating Platform*



**Tournament
Players Club (TPC)
Kuala Lumpur**
First and only fully
certified Audubon
Cooperative Sanctuary
for Golf in Malaysia
*Global Golf Course
Sustainability
Accreditation*



**TOTAL CARBON
EMISSIONS REDUCTION
13,932 tCO2-e**
RM0.55 million direct savings
in 2019 compared to 2018
and 42.5% Emissions Intensity
Reduction
*Reducing our impact
on Global Warming
and Climate Change*



Waste Intensity
2.25% Reduction
(against 2016 baseline)
*Reducing pollution
impact*



Water Intensity
Reduction 2.26%
(against 2016
baseline)
*Reducing water
availability stress*



20,166
Red List Trees Planted
(2011-2019)
*Planting rare / threatened
Malaysian tree species*



98,849
Total Trees Planted
(Sept 2011-Mar 2020)
*Applying our 1:1
replacement target to build
a carbon sink and to help
mitigate climate change*

Achieving Our Shared Goals

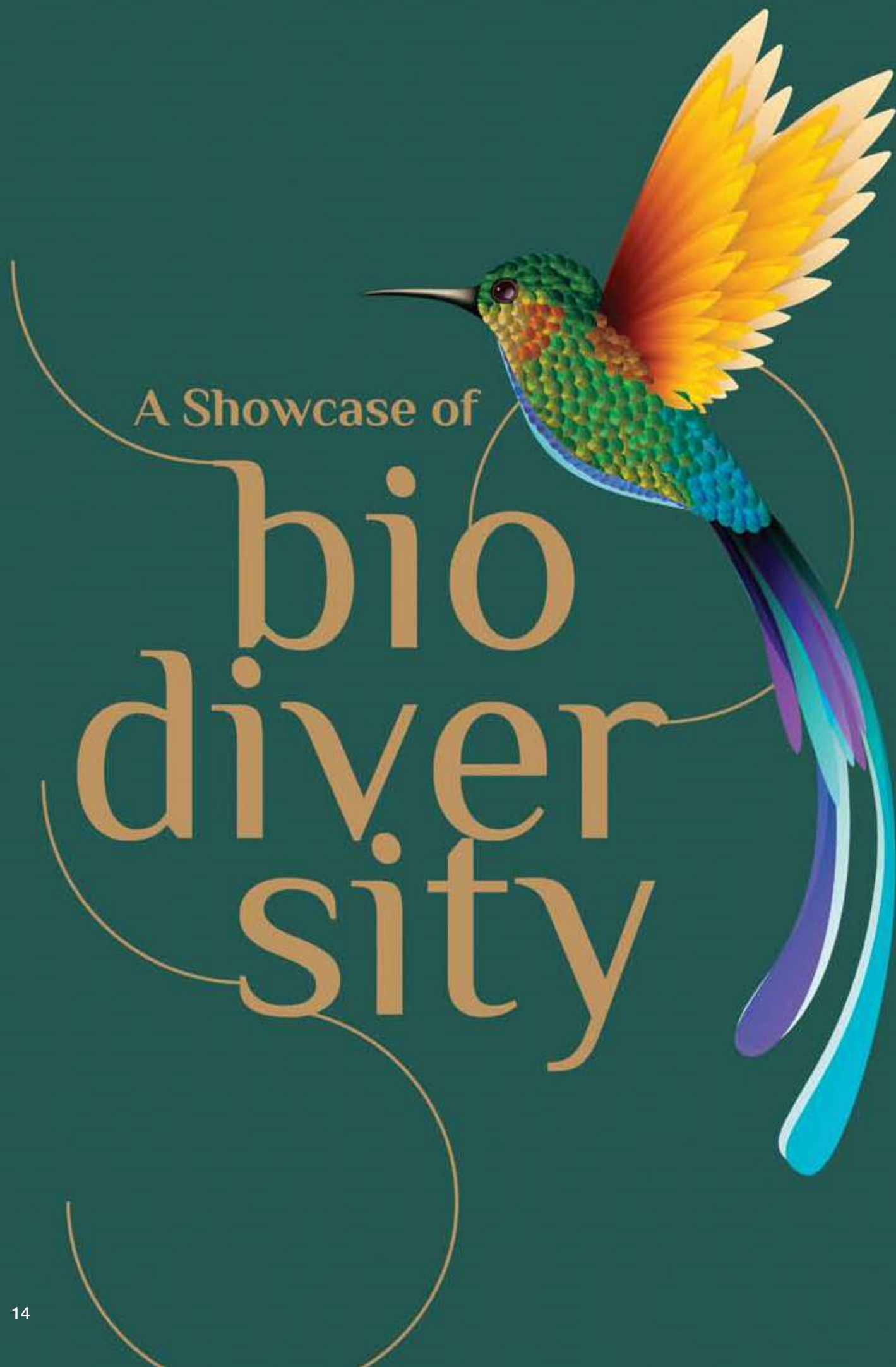
The 2030 Sustainable Development Goals (SDG) are universal goals developed by the United Nations. The goals were unveiled in 2015 as a call to action to achieve balanced, sustainable development, end poverty, protect the planet, and ensure that people can prosper and live peacefully by 2030.



SDP 2030 Sustainability Goals

The Sime Darby Property 2030 Sustainability Goals are the Group’s industry interpretation of how it can contribute towards realising the UN SDG 2030.





Biodiversity is the very fabric of the Earth. It is diversity in plants and animals that enables ecosystems to thrive. Yet, millions of flora and fauna are increasingly threatened and facing extinction. This is why we placed sustainability at the heart of the City of Elmina. With its 6,500-acre masterplan that embraces the natural hills and waterways, to its 300-acre Central Park that houses the Elmina Rainforest Knowledge Centre (ERKC) and Endangered, Rare & Threatened (ERT) Native Tree Nursery, as well as its connection to the 2,700-acre Subang Forest Reserve, City of Elmina provides the perfect setting for sustainable living.

Here, residents come home to dwellings with eco-friendly, energy-saving features and are part of a close-knit community. The parkland and wetlands at Elmina are designed to help the biodiversity within to flourish. This innovative, naturalistic approach ensures that the community here enjoys nature's precious treasures close to their homes for generations to come. And that's how life should be, naturally.



Wetlands are cradles for biodiversity, providing living space for countless species of flora and fauna. Wetlands International is happy to collaborate with Sime Darby Property to showcase the rich biodiversity of the wetlands within the City of Elmina.

Wetlands International

How Life Should Be, Naturally.



Inspired by its plantation roots and designed according to the internationally recognised Mercer's Quality of Living Survey that measures liveability, the City of Elmina sets a new benchmark in Malaysia as the largest township dedicated to wellness and liveability.



6,500-acre
sustainably
master-planned city



1,118-acres
of lush parks
and open spaces



A self-sustaining city that inspires wellness

Wellness, community and sustainability are at the heart and soul of the City of Elmina. Here, people can connect and thrive in a lush green haven, designed with their well-being in mind. Comprising five townships, namely Denai Alam, Bukit Subang, Elmina East, Elmina West and Elmina Business Park, this 6,500-acre sustainably masterplanned community has 1,118-acres of parkland that is complemented by the sprawling, nearby Subang Forest Reserve. Residents of Elmina enjoy a way of life that is truly inspiring in this sustainable city of the future.

A highly desired address within the Greater Klang Valley, the city is part of the new growth area along the Guthrie Corridor Expressway and is easily accessible via an extensive network of expressways. The seamless connectivity combined with sustainable features such as a 300-acre Central Park and wellness community complex, 90km cycling and jogging track network as well as a Commercial Hub at Elmina East and West creates a self-sustaining city with excellent investment growth potential. Most importantly, it is a place where people and nature can thrive in harmony for generations to come.

8 Pillars of Wellness

At City of Elmina, we see life differently. Instead of focusing on just brick and mortar houses, we looked at the idea of a home in a holistic way. With Elmina’s 8 Pillars of Wellness in mind, we created an environment where family and community come first. These pillars guide us to not just turn houses into homes but more importantly, transform the City of Elmina into a vibrant township with a close-knit community.



Environmental Wellness

Cultivating rejuvenating spaces that assimilate the beauty of nature and landscapes.



Physical Wellness

Building welcoming spaces that promote and encourage active lifestyles.



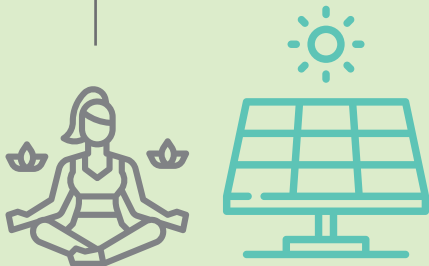
Emotional Wellness

Crafting spaces that inspire positive attitudes, mindsets and an optimistic outlook on life.



Mental Wellness

Providing tranquil spaces for people to achieve a state of harmony within.



Family Wellness

Planning nurturing spaces that uphold family values, encourage mutual respect and openness.



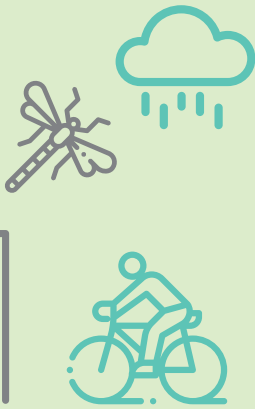
Occupational Wellness

Designing versatile work spaces that deliver a comfortable work-play balance.



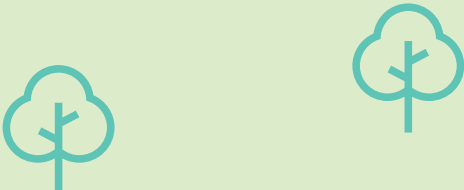
Community Wellness

Creating inclusive spaces that facilitate easy interaction between individuals and the larger community.



Intellectual Wellness

Shaping spaces that enable intellectual growth, learning and discovery.





Sharing Nature's Treasures

Sustainable development is about meeting the needs of the present while preserving our heritage for future generations. With this in mind, we work hand-in-hand with organisations such as Wetlands International, Tropical Rainforest Conservation & Research Centre, UNICEF and other sustainability champions.

These partnerships have resulted in great positive outcomes not only in terms of conservation efforts but also in creating awareness among the residents of the City of Elmina on the importance and benefits of living in harmony with nature.

TROPICAL RAINFOREST
CONSERVATION
& RESEARCH CENTRE 

Our collaboration with Sime Darby Property will help raise awareness on the plight of the Malaysian rainforest, and hopefully make rainforest conservation more accessible for people to participate in.

Dr. Dzaeman Dzulkifli
Executive Director of TRCRC

A Haven for Biodiversity Conservation

We aim to plant 210,000 trees in the City of Elmina, which include Endangered, Rare & Threatened (ERT) tree species from the Subang Forest Reserve. This reforestation initiative is part of Elmina's vision to ensure that future generations will still be able to enjoy the rich natural heritage that we have today.

Subang Forest Reserve Dam

A forest park for today and tomorrow

At Elmina's Forest Park precinct, residents can experience living near an 84-acre forest park that is an extension of the adjoining 2,700-acre Subang Forest Reserve. Apart from being an essential green lung and freshwater supply catchment, this verdant reserve is also home to a variety of Endangered, Rare & Threatened (ERT) tree species.

In a joint effort with Tropical Rainforest Conservation & Research Centre (TRCRC), we aim to collect ERT Tree Species seeds from the forest reserve and plant them within the City of Elmina. Some of these tree species include *Adinandra Dumosa* (Tiup Tiup), *Baccaurea Macrocarpa* (Tampoi) and *Callerya Artororpurea* (Tulang Daing). Two dedicated nurseries were created to nurture these ERT species before they are replanted within the City of Elmina. This reforestation initiative is part of Elmina's vision to ensure that future generations will still be able to enjoy the rich natural heritage that we have today.

Elmina's long-term rainforest biodiversity initiatives:

- Endangered, Rare & Threatened (ERT) Tree Species Planting Programme.
- 2.42-acre Elmina Living Collection Nursery (ELCN) specialist tree nursery for experiential biodiversity education and recreation. (Managed by Tropical Rainforest Conservation & Research Centre)
- 1.09-acre Elmina Rainforest Knowledge Centre (A dedicated centre focused on community education and engagement)



Subang Forest Reserve Seed Collection Recce with TRCRC and Jabatan Perhutanan



210,000

Total trees to be planted in the City of Elmina



21,000

Endangered, Rare & Threatened (ERT) tree species to be planted in the City of Elmina



4,263 mt. tonnes carbon sequestered per year (crude carbon sequestration figure/tree + 20.3kg/tree)



Scan this to view a digital copy

A Guide for Saving our Endangered Trees

Sime Darby Property published the 'Malaysian Threatened and Rare Tree Identification and Landscape Guideline' as part of its ongoing biodiversity programme. This publication aims to promote awareness on IUCN Red List Tree Species and their conservation. A culmination of years of Research & Development and collaborative efforts, it serves as a detailed guide for landscape architects, students as well as others in the field of ecology.

Getting to know Nature

At City of Elmina, we focus on replanting an urban rainforest within the 300-acre Central Park to enhance biodiversity, help mitigate climate change and create an environment that provides opportunities to learn the importance of conserving our natural heritage.

An eco-friendly knowledge centre

The Elmina Rainforest Knowledge Centre (ERKC) features sustainable and tropical designs inspired by the 1930s Guthrie estate buildings. The ERKC was constructed using recycled components from Sime Darby Property's Idea House (SDIH) in Denai Alam, dismantled in May 2018. The materials recycled from SDIH demonstrates the "reusability" of structures built using the Industrialised Building System (IBS) construction method. Other building materials used such as timber doors, paint, ceiling gypsum boards, water closets, flooring, roof and wall tiles were all selected because of their Green Label certification. The ERKC's eco-friendly designs also include a rainwater harvesting solution and promotes natural cooling through effective shading and enhanced cross ventilation.

Rainforests play an essential role in keeping our planet and its inhabitants healthy. They absorb carbon dioxide and release oxygen that we need for our survival, and bless us with picturesque views. They also help stabilise the Earth's climate and maintain the world's water cycle by adding moisture to the atmosphere.

Learning more about our rainforests

At the Elmina Rainforest Knowledge Centre (ERKC), you will be able to experience and learn all about Malaysian Rainforests, the importance of their conservation as well as the immense benefits they bring to our daily lives. Nestled within Elmina's Forest Park precinct next to the vast Subang Forest Reserve, this 1.09-acre ERKC together with a 2.42-acre Elmina Living Collection Nursery (ELCN) Tree Nursery operate in collaboration with Tropical Rainforest Conservation & Research Centre (TRCRC), a local non-profit organisation which specialises in rainforest research and conservation.

Designed to be the "Gateway to Malaysia's Natural Heritage", the ERKC connects communities within and beyond Elmina to our abundant natural treasures. The centre will focus on environmental education and conservation, research and development, eco-tourism as well as other green community activities. The ERT Native Tree Nursery will concentrate on nurturing up to 100,000 threatened species under the International Union for Conservation of Nature (IUCN) Red List.

Many of these trees will be planted within the Elmina Central Park. At the same time, the nursery will ensure a continuous supply of ERT tree species for planting at the township as well as other Sime Darby Property townships in the future. In essence, this reforestation initiative will connect communities with nature. With TRCRC's expertise, we will be able to achieve greater community awareness on the benefits of living in harmony with nature.

Elmina Rainforest Knowledge Centre's Sustainable Design Features



Lush trees are planted to reduce heat, and a rainwater harvesting tank has been installed for landscape irrigation.



Heat insulation materials are used to help keep the interior spaces cool naturally.



Solar panels recycled from SDIH offset about 63% of the building's energy consumption with lighting fixtures that utilise energy-saving LED technology.



Open plan concept which promotes cross ventilation and natural cooling of interior spaces with strategically positioned overhanging shades that reduce glare and heat from direct sunlight.



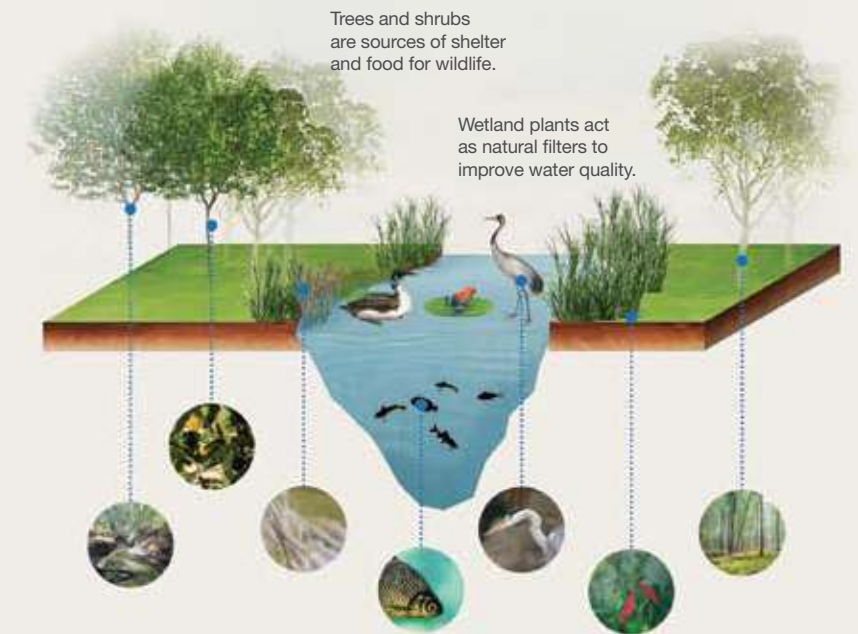
Persons with disability-friendly features such as dedicated parking spaces, wheelchair ramps and more.

Rejuvenating Our Wetlands

Wetlands are more than just scenic backdrops, they are essential sources of water for life on earth. They protect and improve water quality, provide fish and wildlife habitats, store floodwaters and keep surface water flowing during dry seasons.

For these reasons, conservation specialists from Wetlands International were engaged to keep the wetlands and waterways within Elmina's five park precincts rejuvenated. Aquatic plant species that act as natural filters to improve the water quality are carefully curated and replanted here. The right plant species and aquatic life introduced to the area would attract birds as well as other fauna that will enhance the biodiversity and natural ecology of this habitat.

The 300-acre Elmina Central Park, shaped like a basin, acts as a natural floodplain during the monsoon season which can mitigate a 1,000 year flood event (flooding that occurs only once in 1,000 years). This innovative and naturalistic approach ensures that the community here will be able to enjoy nature's precious treasures in a healthy environment for generations to come.



The 300-acre Central Park can transform into a natural floodplain in the unlikely occurrence of a one in a thousand years (Q1000) flood event.

Preservation and Play

Within this sustainably master-planned city, you will discover an emerald gem in the form of a 300-acre Central Park. This vast green lung is the heart of the community. It connects the residential precincts with the main commercial hub within the City of Elmina as well as to the adjoining 2,700-acre Subang Forest Reserve.



Photo by
Tan Ee Long

City of Elmina has a 45km neighbourhood track which connects homes to parkland, wetlands, amenities and the commercial hub as well as a 45km city-wide track that links the entire township.



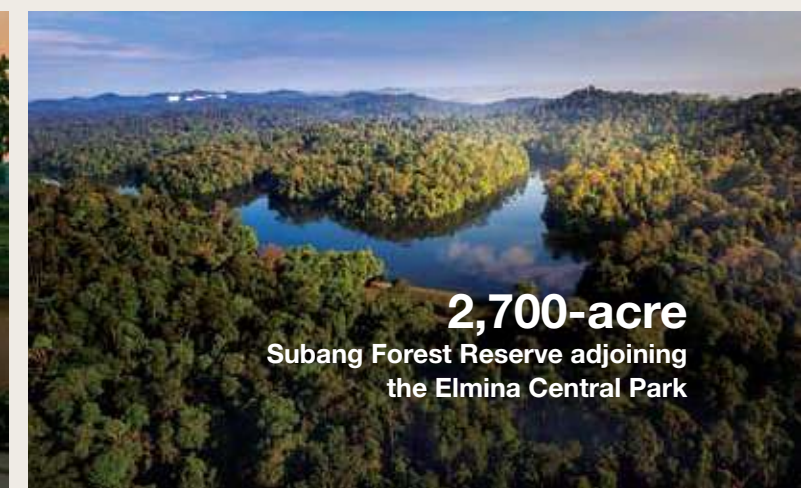
Photo by
Lee Poh Cho

90km
Jogging and Cycling
Track Network



Photo by
Rasli Syamil

300-acre
Central Park with lush
green spaces and wetlands.



2,700-acre
Subang Forest Reserve adjoining
the Elmina Central Park

5 Themed Precinct Parks

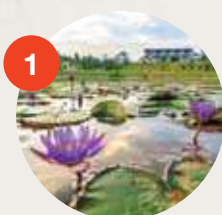
which promote
Elmina's Key Pillars
of Wellness

Residents here can take a relaxing bicycle ride or a leisurely stroll to different locations within the City of Elmina via the 90km cycling and jogging track, one of the longest tracks in Malaysia.



Did you know?

A colony of adorable otters have made Elmina Central Park their home and were spotted at the wetlands area.



Forest Park

- Boulevard
- Thematic Walk
- Fern Terrace
- Promenade
- Visitors' Car Park
- Bathing Place
- Retail & Park Management Office
- Camp Site
- Outdoor Theatre Lawn
- Bicycle Trail
- Forest Pavilion
- Observation Deck
- Connecting Bridge
- Elmina Rainforest Knowledge Centre
- Forest Boardwalk
- Pond 10
- Rainbow Bridge



Arts & Cultural Park

- Open Field
- Boulevard
- Terrace Garden
- Amphitheatre
- Food Truck Plaza
- Sound Garden
- Play Park
- Flower Terrace
- Promenade
- Park Stage
- Visitors' Car Park
- Kiosks and F&B Dining
- Connecting Bridge



Urban Park

- Iconic Bridge Landing Plaza
- Food Truck Plaza
- Kiosks and F&B Dining
- Promenade
- Open Field
- Boulevard
- Visitors' Car Park
- Signature Pavilion
- Steps & Staircases
- Floating Island
- Water Trail
- Eco-Lake
- Terrace Garden
- Sports Zone
- Play Park
- Mound of Life
- Smart Toilets



Community Park

- Fitness Zone
- Picnic Terrace
- Open Green Lawn
- Plaza
- Sports Pitch
- Stream
- Amphitheatre Hill
- Recreational Zone
- Community Garden
- Iconic Bridge
- Inclusive Playground

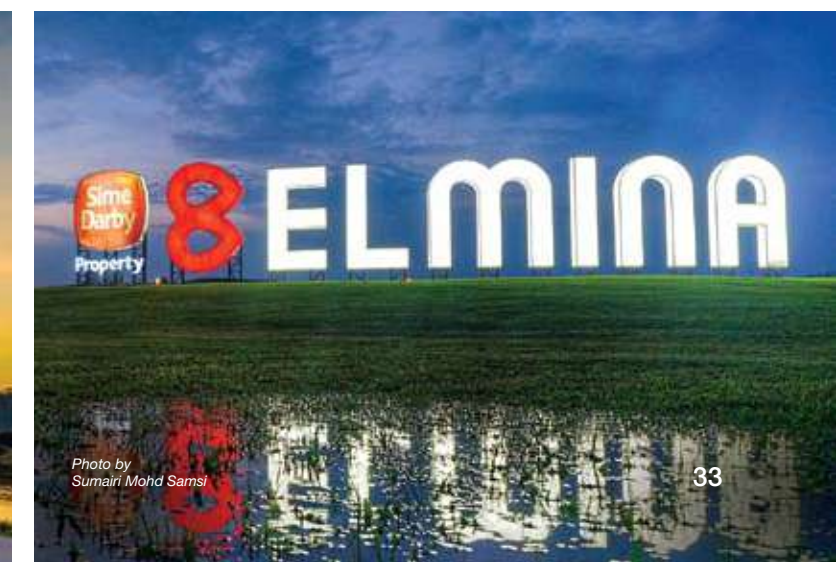


Sports Park

- Paintball Games Area
- Iconic Shelter
- Plaza
- Velodrome Track
- Skateboard/ Rollerblade Track
- Mountain Bike Track
- Go Kart & Mini Bike Track
- Flying Fox
- Equestrian Plaza
- Playground
- Futsal Court
- Badminton Court
- Basketball Court
- Netball Court
- Football Field
- Origami Pavilion
- Plaza & Bike Station
- Driving Range
- F&B Kiosk
- Visitors' Car Park
- Wetlands Pond

An Instagrammable Park for the Family

Elmina Central Park is the perfect environment for families and friends to have fun and share memorable moments. Whether it's snapping a wefie at one of the park's Instagrammable landmarks like the Rainbow Bridge or attending a lakeside concert with 10,000 people at the Park's amphitheatre, residents here have many avenues to collaborate and connect.



Creating Malaysia's First Inclusive Playground

unicef
for every child

A Playground for All

When children play, they learn and develop physically, emotionally, and cognitively, enabling them to improve their ability to navigate the world. Playtime for kids is so essential it's even enshrined in Article 31 of the United Nations' Convention on the Rights of the Child. At City of Elmina, you will find Malaysia's first inclusive playground where kids with and without disabilities can play together as equals to their hearts' content. Created in partnership with UNICEF Malaysia, the playground is an essential part of Elmina Central Park which also creates opportunities for inter-generational interaction within families.

With inclusive facilities and public spaces that are accessible to all, City of Elmina provides a living environment that celebrates diversity and nurtures a close-knit community. This pioneering initiative sets the benchmark for the creation of inclusive playgrounds and public spaces in Malaysia. A Best Practices Circular and Guidance Toolkit were produced to encourage other property developers to emulate the best practices that are beneficial for future generations.



Inclusive multi-spinner carousel



Inclusive swing seats



“Inclusive Playgrounds not only enable children with and without disabilities to play together as equals, they also create opportunities for inter-generational interaction within families and social cohesion of the wider community. The Inclusive Playground in the City of Elmina led by Sime Darby Property will be held up as a beacon of good business practice which is socially responsible and inclusive for all.”

Dr Rashed Mustafa Sarwar, UNICEF Representative to Malaysia and Special Representative to Brunei Darussalam



Inclusive Playground Features:

- | | |
|--|----------------------------------|
| 01. Mesh Fencing | 08a. Dry Pebble Creek |
| 02. Lawn | 08b. Pebble Creek Pebble Pattern |
| 03. Coloured Concrete Path | 09. Feature Rock |
| 04. Exposed Aggregate Path | 10. Stepping Stones |
| 05. Unit Paved surface along Sensory Path | 11. Timber Log |
| 06. Highlighted Paved Surface | 12. Retaining Seating Wall |
| 07. Impact Attenuating surface (Rubberised Flooring) | 13. Seat with Back & Arm Rest |

Veggies & Herbs Galore

Residents are reaping the benefits of growing their own vegetables at the Elmina Community Edible Garden. This communal garden not only provides a dedicated space for growing greens, but also creates opportunities for neighbours to get acquainted and families to nurture their relationships.

Growing Your Own Food

It's certainly a rewarding experience when you get to taste the fruits of your labour, literally. Apart from just the feel good factor, there are plenty of other practical reasons why growing your own greens is good for you. From having a better understanding of what you are consuming to potential savings on your grocery bills, the list is endless. In Elmina, residents are reaping the benefits of growing their herbs and veggies at the shared Elmina Community Edible Garden. Located within the Central Park at Elmina West, the Garden provides residents with a dedicated space to grow edible greens and creates opportunities for them to nurture family bonds and make new neighbourhood friends.

The Elmina Community Edible Garden has enabled the execution of a host of community-centric programmes that promote sustainable living with the collaboration of Shah Alam City Council (MBSA) as well as other eco-friendly organisations. This Garden is also linked to Elmina's city-wide organic waste recycling programme and plays a vital role in helping create a caring community that is focused on building a happier, healthier future.



The community is able to grow edible crops for their own consumption as well as generate income from selling the produce.

Community Garden at Melati Apartments, Bukit Subang

This initiative was established to provide low-income families in the Bukit Subang township with essential facilities to grow edible crops for their own consumption as well as to generate income from selling the produce. The Melati Community Garden employs an urban farming concept that puts underutilised green spaces to use.

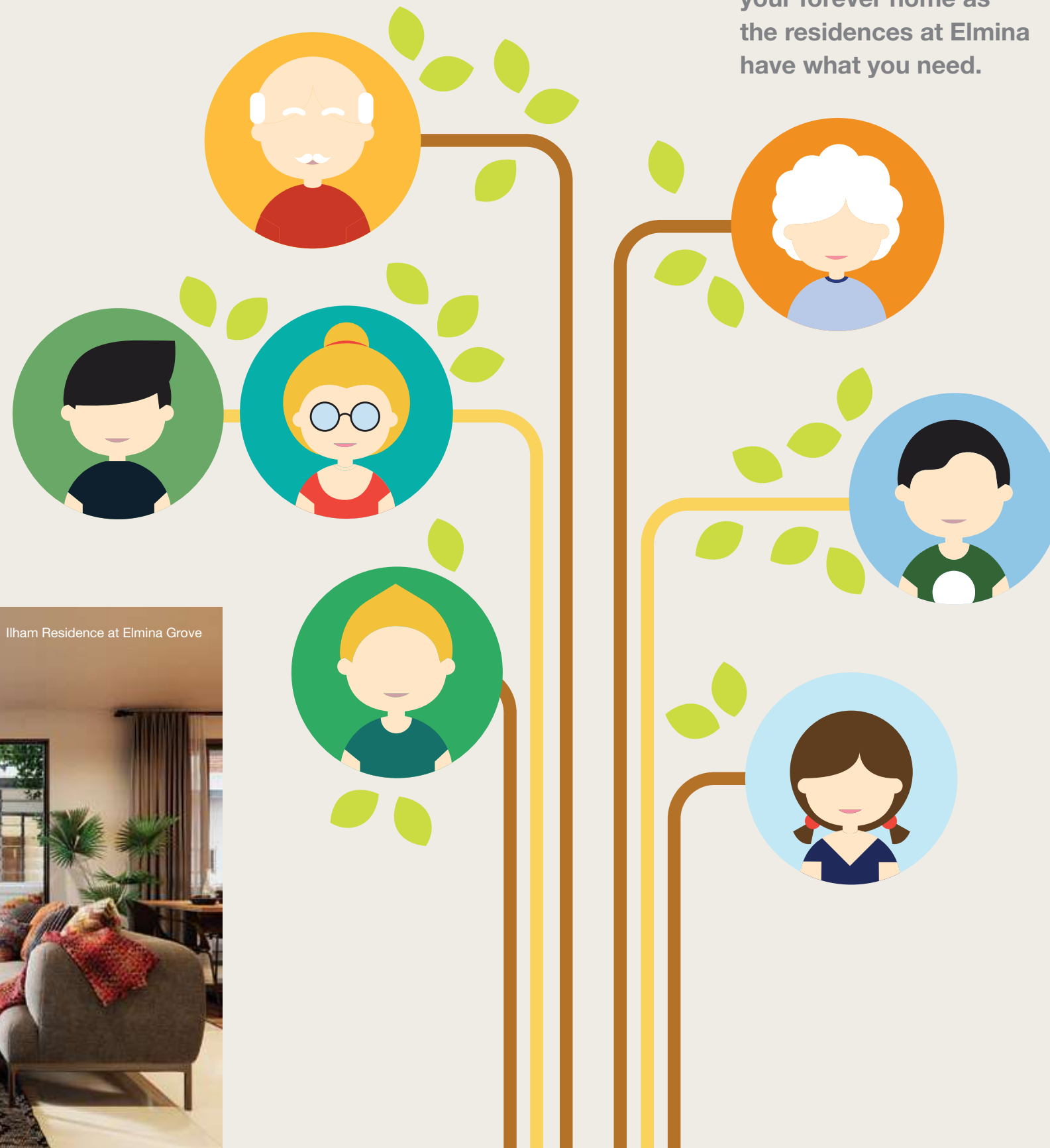
Phase 1 involves an area of 74m x 6m while Phases 2 and 3 cover areas of 70m x 6m and 64m x 6m respectively. These phases will be developed in stages and will adopt the fertigation system, a crop management method that provides fertiliser and water supply through drip irrigation which improves crop nutrient absorption and ensures productive yields. Members of the community garden receive agriculture training to enhance their knowledge and skills, making a positive difference in their lives.



A Sustainable Home for Generations

Multi-generation lifetime homes

It is becoming increasingly popular for families spanning three generations to live together under the same roof, highlighting the 'importance of family' among Malaysians. Therefore, it is essential for homes today to be able to accommodate the evolving needs of these larger family units. At City of Elmina, residents will experience multi-generational living at its finest. For the elderly, there is an airy bedroom on the ground floor with an en-suite bathroom that allows for easy access. Each home is spacious and comfortable, perfect for family members to spend quality time together or unwind in their own private spaces. Those with green thumbs can experience true community living by tending to the edible garden in their backyard while catching up with neighbours.



Homes at City of Elmina have been meticulously designed with versatility in mind to cater to growing families. Look no further for your forever home as the residences at Elmina have what you need.



Multi-generational home features:



Home alarm system and security grilles installed for total peace of mind.



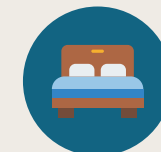
Column-free car porch for extra space and easy mobility.



Open plan layout that offers the flexibility of adapting spaces to meet different needs.



Large windows that allow plenty of natural light and fresh air into the home.



Spacious bedrooms, each with an en-suite bathroom.



Elderly and persons with disabilities-friendly features such as wheelchair ramps and pocket doors that provide easy access.



Air-conditioning points and piping are pre-installed for greater convenience.



Linear garden at the backlane to foster a close-knit neighbourhood.



Easy and safe access to neighbourhood parks and recreational facilities nearby.



ILHAM RESIDENCE



Smarter, Greener Homes

Homes in the City of Elmina are built with sustainable features in mind. In 2019, Sime Darby Property partnered with TNBX, a subsidiary of Tenaga Nasional Berhad, to introduce Smart Green Home Solutions for residences in Elmina Grove.

Through this first-of-its-kind collaboration, 513 homes will be fitted with photovoltaic solar panels and smart meters to generate green-energy powered homes. Each home will be able to generate solar energy that can possibly offset electricity bill charges.

This innovative system not only helps deliver cost saving practices for residents but also offers an eco-friendly solution for the environment.



Scan this to discover more

www.simedarbyproperty.com/elmina-grove/ilham-residence/

Residences in the City of Elmina have spacious open-plan layouts that promote cross ventilation for natural cooling, and interior spaces that maximise natural sunlight. These features reduce the need for air-conditioning as well as artificial lighting, therefore lowering electricity consumption. In addition, the use of heat insulation and eco-friendly building materials will benefit the environment in the long run.



Residences at the City of Elmina have innovative features that promote energy efficiency :



Solar Home and Smart Meter Technology



Stone Wool Roof Insulation



Solar Water Heating



Gypsum Ceiling Boards (Green Label Certified)



WELS/WEPLS Certified Water Saving Bathroom Fittings



Low Volatile Organic Compound (VOC) Paint



Rainwater Harvesting



Wall & Floor Tiles (Green Label Certified)



LED Street Lighting



Engineered Timber Floor / Laminated Flooring (FSC Certified)



Roof Tiles (Green Label Certified)



TNBX
Your Trusted Energy Partner
A subsidiary of TNB

The solar panels installed on all 513 homes at Elmina Grove will generate about 1MW of green energy. The potential cost savings are estimated to be up to 50% for electricity bills above RM200.

TNBX Sdn Bhd

The Journey Continues

While we remain steadfast in building a thriving community in the City of Elmina, we will continue to evolve and adopt innovative solutions to create sustainable values for the generations to come.



We ensure that our township and landscape master-planning embraces nature right from the start.



We strive to conserve our natural heritage and enhance biodiversity for future generations.



We create award-winning townships that continue to flourish sustainably over time.



We are committed to share expertise and knowledge to build a better future for our community and planet.



Scan this to discover more



Property