



STEP INTO A WORLD
OF LUXURY EVENTS



**Convention
Centre**



1A, Jalan Bukit Kiara 1, Bukit Kiara, 60000 Kuala Lumpur

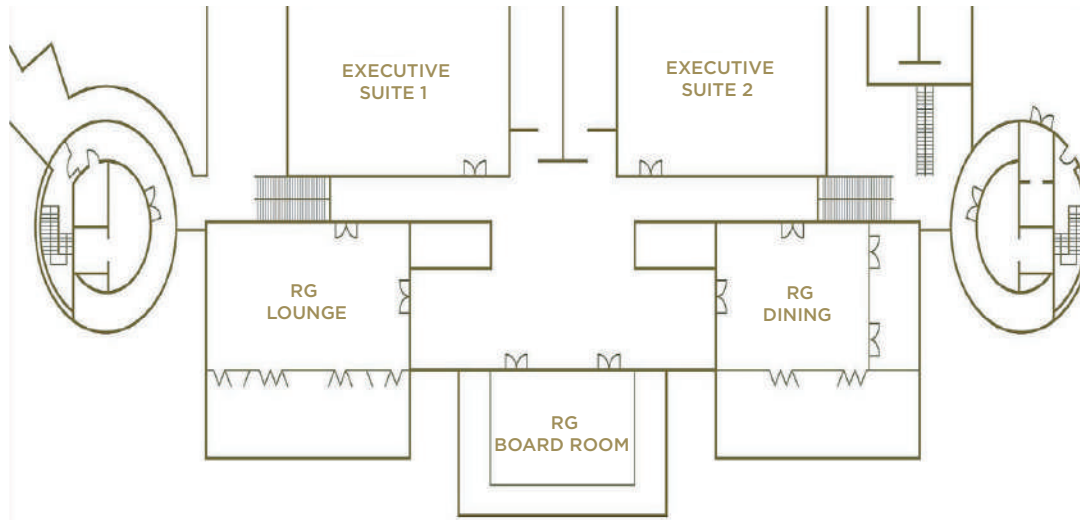




ROOF GARDEN LEVEL R

Similar to Roof Garden Dining and able to accommodate more than 60 persons. Roof Garden Lounge is connected with a veranda overlooking the spectacular view of Kuala Lumpur Golf & Country Club's golf course.

ROOF GARDEN LAYOUT PLAN



RG LOUNGE

Room Size: 1,430 sqf
Ceiling Height: 19.5 ft
Room Dimension: 55 x 26 ft

RG DINING

Room Size: 1,092 sqf
Ceiling Height: 14.4 ft
Room Dimension: 42 x 26 ft

EXECUTIVE SUITE 2

Room Size: 432 sqf
Ceiling Height: 9.8 ft
Room Dimension: 16 x 24 ft

RG BOARDROOM

Room Size: 780 sqf
Ceiling Height: 19.5 ft
Room Dimension: 39 x 20 ft

EXECUTIVE SUITE 1

Room Size: 576 sqf
Ceiling Height: 9.8 ft
Room Dimension: 16 x 36 ft



#SDCC, ROOF GARDEN

| ROOM SETUP BUILD UP AREA | CAPACITY | | |
|-----------------------------|--------------|---------------------|--------------|
| | RG LOUNGE | RG BOARD ROOM | RG DINING |
| BANQUET | 100 | - | 80 |
| THEATRE | 120 | - | 100 |
| CLASSROOM | 54 | - | 36 |
| COCKTAIL | 100 | - | 80 |
| U-SHAPE | 20 | 18 | 20 |
| BOARDROOM | 25 | 20 | 20 |

NOTE: THE CAPACITIES ABOVE DO NOT INCLUDE STAGE & BUFFET LINE.

| DURATION | RATE (RM) | | |
|----------------------|--------------|------------------|--------------|
| | RG LOUNGE | RG BOARD ROOM | RG DINING |
| HALF DAY (4 HOURS) | 2,300 | 1,250 | 1,750 |
| FULL DAY (8 HOURS) | 4,600 | 2,500 | 3,500 |
| PER HOUR WITHOUT A/C | 150 | 150 | 150 |
| PER HOUR WITH A/C | 250 | 250 | 250 |

AVAILABLE AMENITIES: FREE WIFI | PARKING SPACE | DAY LIGHT

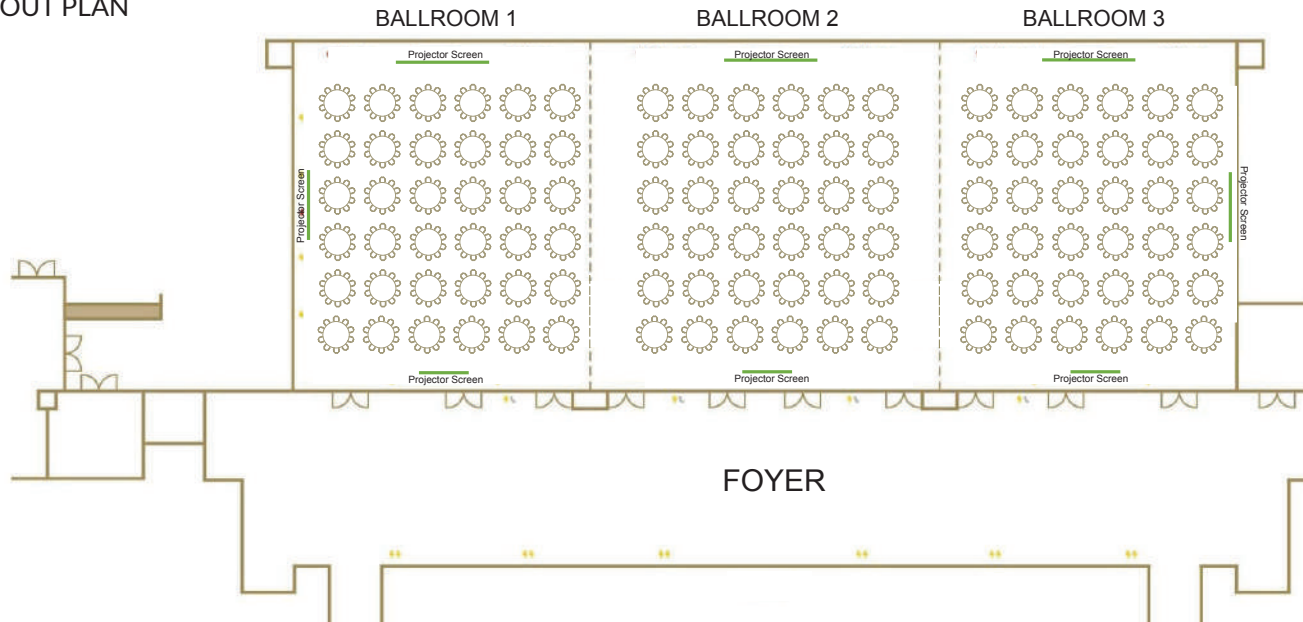


GRAND BALLROOM

LEVEL 1

The stunning Grand Ballroom comprises of a column free area of 17,500sq ft to accommodate up to 1,500 guests. For those who are attuned to smaller ballrooms, the ballroom can be converted into three smaller function rooms and each of it can accommodate up to 400 guests. This ballroom has a built in LCD projector with a 23ft x 13ft screen.

GRAND BALLROOM LAYOUT PLAN



GRAND BALLROOM

Room Size: 17,508 sqf

Ceiling Height: 26 ft

Room Dimension: 218 x 81 ft

BALLROOM 1

Room Size: 5,508 sqf

Ceiling Height: 26 ft

Room Dimension: 68 x 81 ft

BALLROOM 2

Room Size: 6,723 sqf

Ceiling Height: 26 ft

Room Dimension: 83 x 81 ft

BALLROOM 3

Room Size: 5,508 sqf

Ceiling Height: 26 ft

Room Dimension: 68 x 81 ft



#SDCC, GRAND BALLROOM

| ROOM SETUP BUILD UP AREA | CAPACITY | | | |
|-----------------------------|----------|-----|-----|-----|
| | 1,2,3 | 1 | 2 | 3 |
| BANQUET | 1,500 | 400 | 550 | 400 |
| THEATRE | 2,600 | 700 | 900 | 700 |
| CLASSROOM | 1,000 | 300 | 400 | 300 |
| COCKTAIL | - | 400 | 500 | 400 |
| U-SHAPE | - | 45 | 45 | 45 |
| BOARDROOM | - | 60 | 60 | 60 |

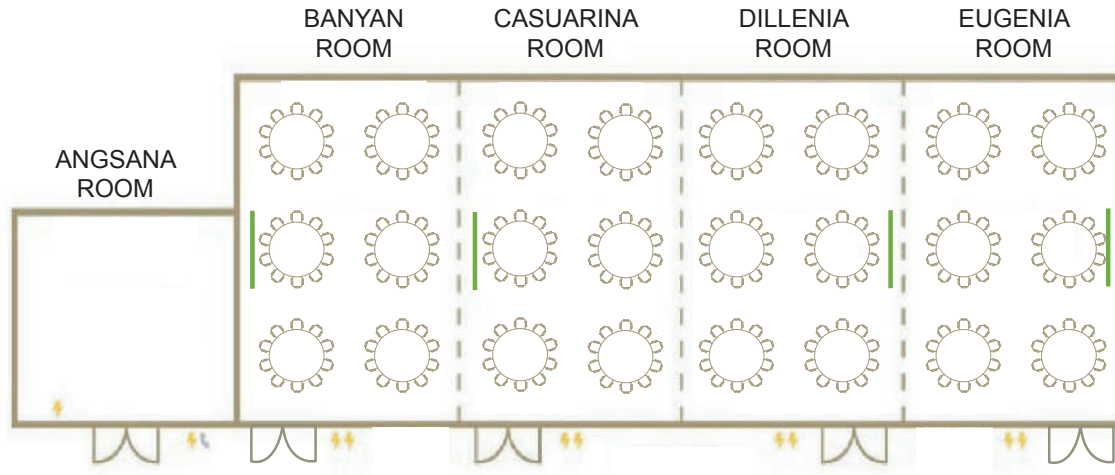
NOTE: THE CAPACITIES ABOVE DO NOT INCLUDE STAGE & BUFFET LINE.

| DURATION | RATE (RM) | | | |
|-------------------------|-----------|--------|--------|--------|
| | 1,2,3 | 1 | 2 | 3 |
| HALF DAY (4 HOURS) | 35,000 | 11,000 | 13,000 | 11,000 |
| FULL DAY (8 HOURS) | 60,000 | 18,000 | 22,000 | 18,000 |
| PER HOUR WITHOUT A/C | 1,000 | 350 | 350 | 350 |
| PER HOUR WITH A/C | 1,500 | 500 | 500 | 500 |

AVAILABLE AMENITIES: FREE WIFI | PARKING SPACE

FUNCTION ROOM

LEVEL G



ANGSANA ROOM

Room Size: 300 sqf

Ceiling Height: 9.8 ft

Room Dimension: 15 x 20 ft

BANYAN ROOM

Room Size: 806 sqf

Ceiling Height: 15.8 ft

Room Dimension: 26 x 31 ft

CASUARINA ROOM

Room Size: 806 sqf

Ceiling Height: 15.8 ft

Room Dimension: 26 x 31 ft

DILLENIA ROOM

Room Size: 806 sqf

Ceiling Height: 15.8 ft

Room Dimension: 26 x 31 ft

EUGENIA ROOM

Room Size: 806 sqf

Ceiling Height: 15.8 ft

Room Dimension: 26 x 31 ft



#Banyan and Casuarina



#Angsana



#Angsana



#Angsana

| ROOM SETUP BUILD UP AREA | CAPACITY | | | | |
|-----------------------------|-----------------|----------------|-------------------|------------------|-----------------|
| | ANGSANA ROOM | BANYAN ROOM | CASUARINA ROOM | DILLENIA ROOM | EUGENIA ROOM |
| BANQUET | 10 | 60 | 60 | 60 | 60 |
| THEATRE | 20 | 80 | 80 | 80 | 80 |
| CLASSROOM | - | 36 | 36 | 36 | 36 |
| COCKTAIL | 10 | 50 | 50 | 50 | 50 |
| U-SHAPE | - | 15 | 15 | 15 | 15 |
| BOARDROOM | 10 | 18 | 18 | 18 | 18 |

NOTE: THE CAPACITIES ABOVE DO NOT INCLUDE STAGE & BUFFET LINE.

| DURATION | RATE (RM) | | | | |
|-------------------------|-----------------|----------------|-------------------|------------------|-----------------|
| | ANGSANA ROOM | BANYAN ROOM | CASUARINA ROOM | DILLENIA ROOM | EUGENIA ROOM |
| HALF DAY (4 HOURS) | 1,000 | 1,300 | 1,300 | 1,300 | 1,300 |
| FULL DAY (8 HOURS) | 2,000 | 2,600 | 2,600 | 2,600 | 2,600 |
| PER HOUR WITHOUT A/C | 150 | 150 | 150 | 150 | 150 |
| PER HOUR WITH A/C | 250 | 250 | 250 | 250 | 250 |

AVAILABLE AMENITIES: FREE WIFI | PARKING SPACE

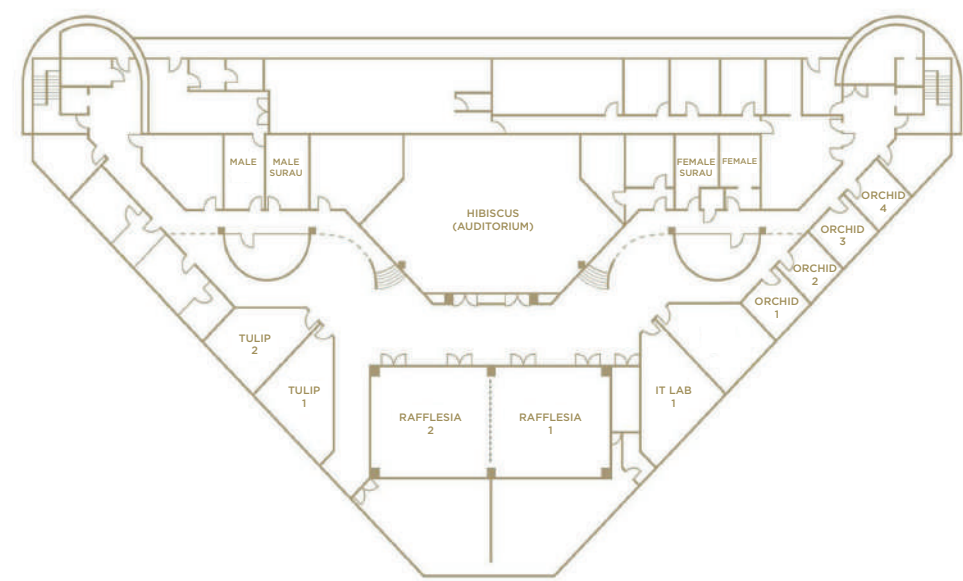


AUDITORIUM

LEVEL LG1

The 181-seater auditorium is an ideal venue for award presentations, seminars, talks, town halls and graduations event.

AUDITORIUM
LAYOUT PLAN



| ROOM SETUP BUILD UP AREA | CAPACITY |
|-----------------------------|----------|
| THEATER | 181 |

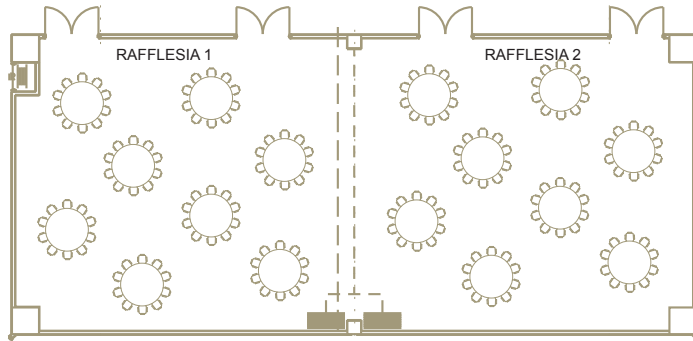
| DURATION | RATE (RM) |
|-------------------------|-----------|
| HALF DAY (4 HOURS) | 4,800 |
| FULL DAY (8 HOURS) | 9,600 |
| PER HOUR WITHOUT A/C | 150 |
| PER HOUR WITH A/C | 250 |

Room Size: 3,000 sqf
Ceiling Height: 19 ft

AVAILABLE AMENITIES:
FREE WIFI | PARKING SPACE

RAFFLESIA

LEVEL LG1



RAFFLESIA 1 & 2

Room Size: 2,368 sqf

Ceiling Height: 9.9 ft

Room Dimension: 64 x 37 ft

RAFFLESIA 1

Room Size: 1,184 sqf

Ceiling Height: 9.9 ft

Room Dimension: 32 x 37 ft

RAFFLESIA 2

Room Size: 1,184 sqf

Ceiling Height: 9.9 ft

Room Dimension: 32 x 37 ft

AVAILABLE AMENITIES:
FREE WIFI | PARKING SPACE

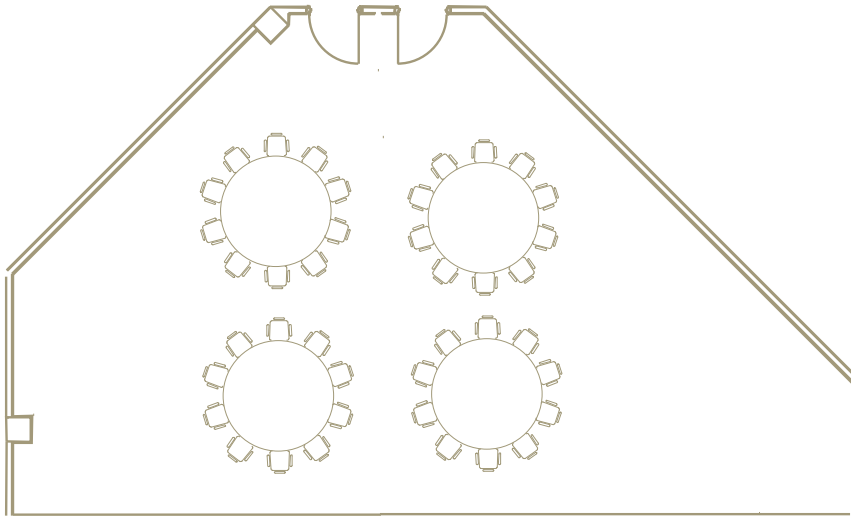
| ROOM SETUP BUILD UP AREA | CAPACITY | | |
|-----------------------------|----------|-----|-----|
| | 1 & 2 | 1 | 2 |
| BANQUET | 160 | 80 | 80 |
| THEATRE | 220 | 100 | 100 |
| CLASSROOM | 100 | 48 | 48 |
| COCKTAIL | 120 | 60 | 60 |
| U-SHAPE | 45 | 32 | 32 |
| BOARDROOM | 60 | 40 | 40 |

NOTE: THE CAPACITIES ABOVE DO NOT INCLUDE STAGE & BUFFET LINE.

| DURATION | RATE (RM) | |
|-------------------------|-----------|-------|
| | 1 | 2 |
| HALF DAY (4 HOURS) | 1,900 | 1,900 |
| FULL DAY (8 HOURS) | 3,800 | 3,800 |
| PER HOUR WITHOUT A/C | 150 | 150 |
| PER HOUR WITH A/C | 250 | 250 |

TULIP

LEVEL LG1



TULIP

Room Size: 1450 sqf

Ceiling Height: 8.8 ft

Room Dimension: 50 x 29 ft

AVAILABLE AMENITIES:
FREE WIFI | PARKING SPACE

| ROOM SETUP BUILD UP AREA | CAPACITY |
|-----------------------------|----------|
| BANQUET | 40 |
| THEATRE | 60 |
| COCKTAIL | 36 |
| U-SHAPE | 28 |
| BOARDROOM | 36 |

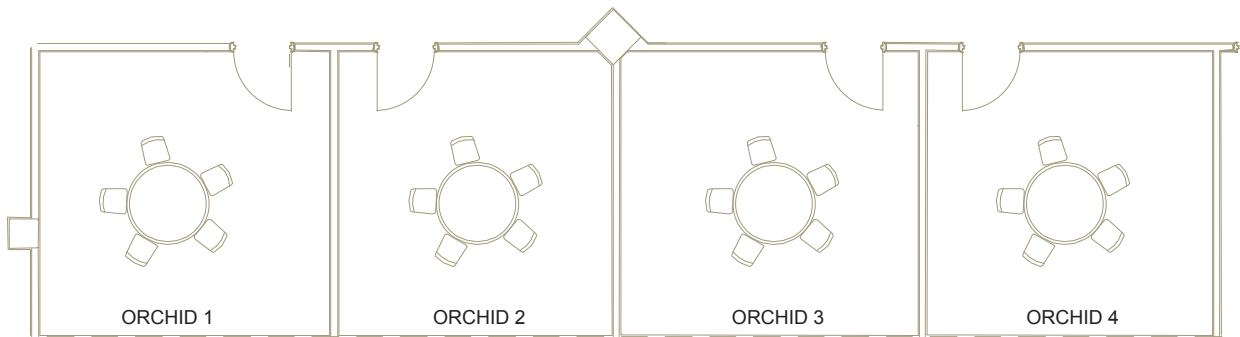
NOTE: THE CAPACITIES ABOVE DO NOT
INCLUDE STAGE & BUFFET LINE.

| DURATION | RATE (RM) |
|-------------------------|-----------|
| HALF DAY (4 HOURS) | 2,400 |
| FULL DAY (8 HOURS) | 4,800 |
| PER HOUR WITHOUT A/C | 150 |
| PER HOUR WITH A/C | 250 |

ORCHID

LEVEL LG1

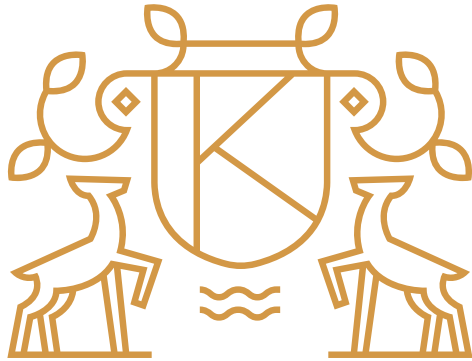
ORCHID
 Room Size: 210 sqf
 Ceiling Height: 7.7 ft
 Room Dimension: 15 x 14 ft



| ROOM SETUP BUILD UP AREA | CAPACITY | | | |
|-----------------------------|----------|----|----|----|
| | 1 | 2 | 3 | 4 |
| BANQUET | 10 | 10 | 10 | 10 |

| DURATION | RATE (RM) | | | |
|-------------------------|-----------|-----|-----|-----|
| | 1 | 2 | 3 | 4 |
| HALF DAY (4 HOURS) | 340 | 340 | 340 | 340 |
| FULL DAY (8 HOURS) | 680 | 680 | 680 | 680 |
| PER HOUR WITHOUT A/C | 150 | 150 | 150 | 150 |
| PER HOUR WITH A/C | 250 | 250 | 250 | 250 |

AVAILABLE AMENITIES:
 FREE WIFI | PARKING SPACE



KUALA LUMPUR
GOLF & COUNTRY CLUB



10, Jalan 1/70D, Off Jalan Bukit Kiara, 60000 Kuala Lumpur



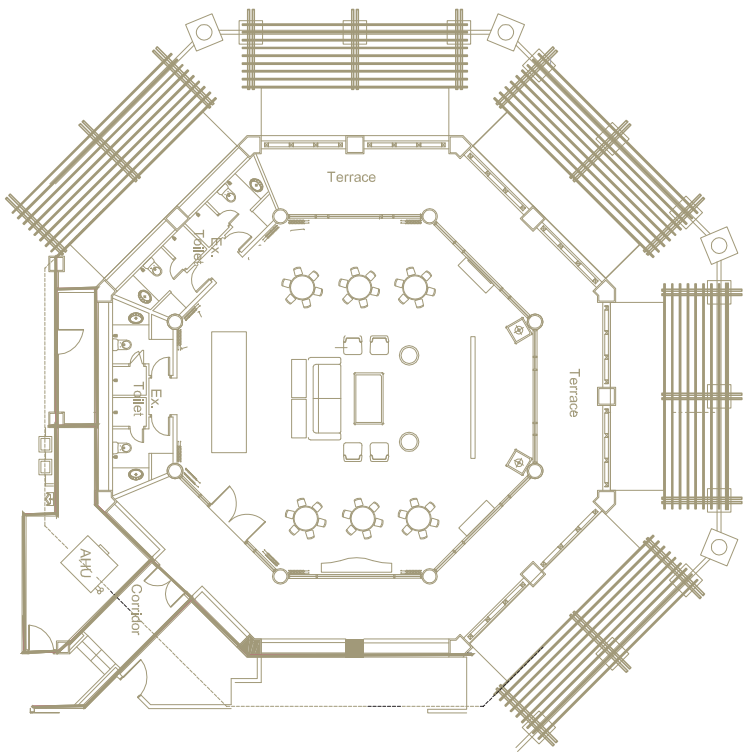
KARAOKE LOUNGE

EAST LOBBY, FIRST FLOOR

Existing sofas with seating arrangement gives the room a feeling of comfort, warmth and a total relaxation. Attached with private restroom and balcony with amazing golf course view. Ideal venue for intimate get-together, celebration, wedding party and discussion forum.



KARAOKE LOUNGE
LAYOUT PLAN



AVAILABLE AMENITIES:
FREE WIFI | PARKING SPACE | BUGGY SERVICE | DAY LIGHT

Room Size: 2016.9 sqf
Ceiling Height: 10 ft
Room Dimension: 45.5 x 44.2 ft

| ROOM SETUP BUILD UP AREA | CAPACITY |
|-----------------------------|----------|
| BANQUET | 30 |
| COCKTAIL | 30 |

NOTE: THE CAPACITIES ABOVE DO NOT
INCLUDE STAGE AND BUFFET LINE.

| DURATION | RATE (RM) |
|-----------------------|-----------|
| HALF DAY (4 HOURS) | 1,500 |
| FULL DAY (8 HOURS) | 3,000 |
| PER HOUR | 500 |



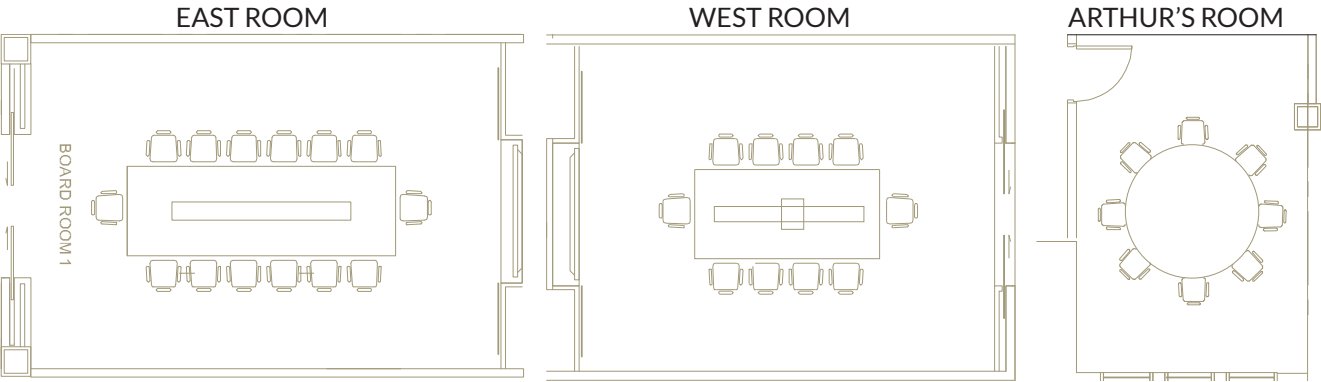
BUSINESS CENTRE

EAST LOBBY, GROUND FLOOR

Meet exclusively in any of our 3 versatile meeting rooms namely, East Room, West Room and Arthur's Room that offer a glimpse of the beautiful surrounding at Main Lobby. All rooms are equipped with state-of-the-art equipment and amenities. These rooms are specially cater for Board meetings.



BUSINESS CENTRE
LAYOUT PLAN



EAST
Room Size: 449.2 sqf
Ceiling Height: 9.2 ft
Room Dimension: 16.8 x 26.6 ft

WEST
Room Size: 395.6 sqf
Ceiling Height: 9.200 ft
Room Dimension: 16.9 x 23.3 ft

ARTHUR'S
Room Size: 244.3 sqf
Ceiling Height: 9.1 ft
Room Dimension: 12.6 x 19.3 ft

| ROOM SETUP BUILD UP AREA | EXISTING SETUP |
|-----------------------------|--------------------------------------|
| CAPACITY | 15 - EAST 10 - WEST 8 - ARTHUR'S |

| DURATION | HALF DAY (4 HOURS) | FULL DAY (8 HOURS) | PER HOUR |
|-----------|-----------------------|-----------------------|----------|
| RATE (RM) | 500 | 1,000 | 150 |

AVAILABLE AMENITIES:
FREE WIFI | PARKING SPACE | BUGGY SERVICE | DAY LIGHT

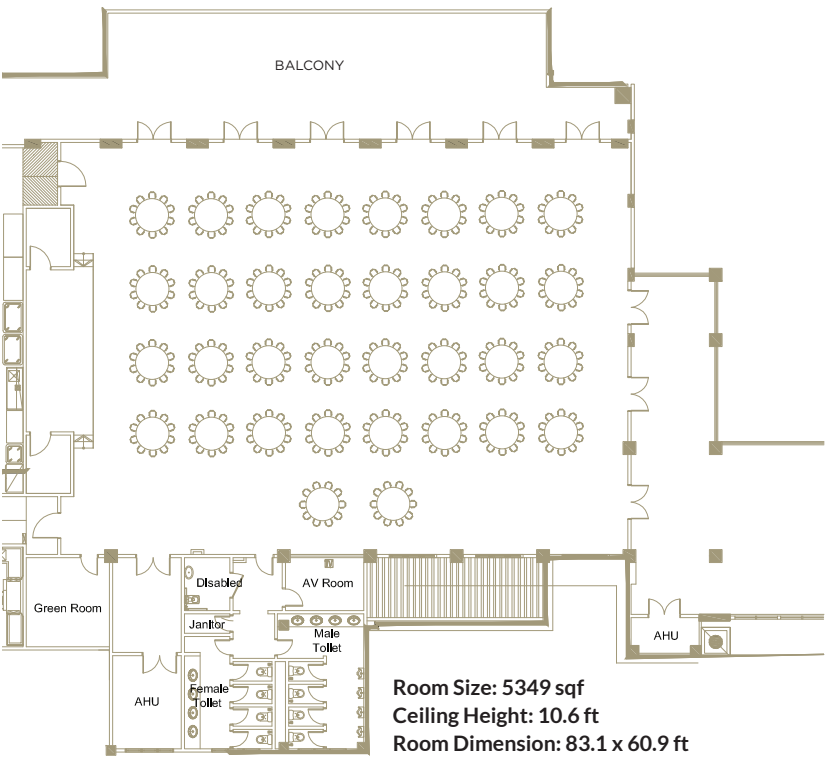


BANQUET HALL

MAIN LOBBY, FIRST FLOOR

A substantial space with English interior concept, the Banquet Hall is perfect for an intimate wedding, business event, annual dinner and many other occasions. It comes with a private balcony overlooking a picturesque golf course view.

BANQUET HALL
LAYOUT PLAN



AVAILABLE AMENITIES:
FREE WIFI | PARKING SPACE | BUGGY SERVICE | DAY LIGHT

| ROOM SETUP BUILD UP AREA | CAPACITY |
|-----------------------------|----------|
| BANQUET | 340 |
| COCKTAIL | 400 |
| CLASSROOM | 180 |
| THEATRE | 400 |
| U-SHAPE | 60 |
| BOARDROOM | 60 |
| WORKSHOP | 150 |

NOTE: THE CAPACITIES ABOVE DO NOT
INCLUDE STAGE AND BUFFET LINE.

| DURATION | RATE (RM) |
|-----------------------|-----------|
| HALF DAY (4 HOURS) | 7,000 |
| FULL DAY (8 HOURS) | 12,000 |
| PER HOUR | 2,000 |

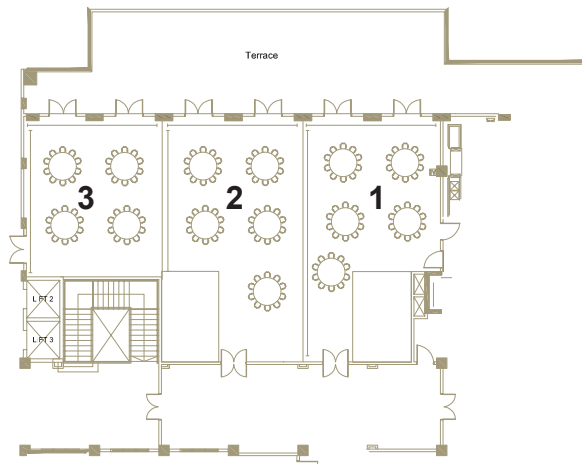
FUNCTION ROOM

MAIN LOBBY, FIRST FLOOR

A meeting room attached with an outdoor balcony that brings in natural sunlight with spectacular view of the golf course. The room is separable into 3 small individual rooms, giving you the flexibility on catering private event.



FUNCTION ROOM LAYOUT PLAN



FUNCTION ROOM 1,2,3

Room Size: 2970 sqf
Ceiling Height: 9.8 ft
Room Dimension:
77.1 x 46.4 ft

FUNCTION ROOM 2

Room Size: 1033 sqf
Ceiling Height: 9.8 ft
Room Dimension:
26.3 x 46.4 ft

FUNCTION ROOM 1

Room Size: 1130 sqf
Ceiling Height: 9.8 ft
Room Dimension:
25.3 x 46.4 ft

FUNCTION ROOM 3

Room Size: 818 sqf
Ceiling Height: 9.8 ft
Room Dimension:
25.5 x 29.6 ft

AVAILABLE AMENITIES:

FREE WIFI | PARKING SPACE | BUGGY SERVICE | DAY LIGHT

| ROOM SETUP BUILD UP AREA | CAPACITY | | | |
|-----------------------------|----------|----|----|----|
| | 1,2,3 | 1 | 2 | 3 |
| BANQUET | 160 | 50 | 50 | 40 |
| COCKTAIL | 140 | 60 | 60 | 40 |
| CLASSROOM | 90 | 30 | 30 | 15 |
| THEATRE | 180 | 60 | 60 | 30 |
| U-SHAPE | 50 | 20 | 20 | 15 |
| BOARDROOM | 50 | 20 | 20 | 15 |
| WORKSHOP | 90 | 25 | 25 | 20 |

NOTE: THE CAPACITIES ABOVE DO NOT INCLUDE STAGE AND BUFFET LINE.

| DURATION | RATE (RM) | | | |
|-----------------------|-----------|-------|-------|-------|
| | 1,2,3 | 1 | 2 | 3 |
| HALF DAY (4 HOURS) | 4,000 | 1,500 | 1,500 | 1,000 |
| FULL DAY (8 HOURS) | 8,000 | 3,000 | 3,000 | 2,000 |
| PER HOUR | 1,200 | 500 | 500 | 300 |

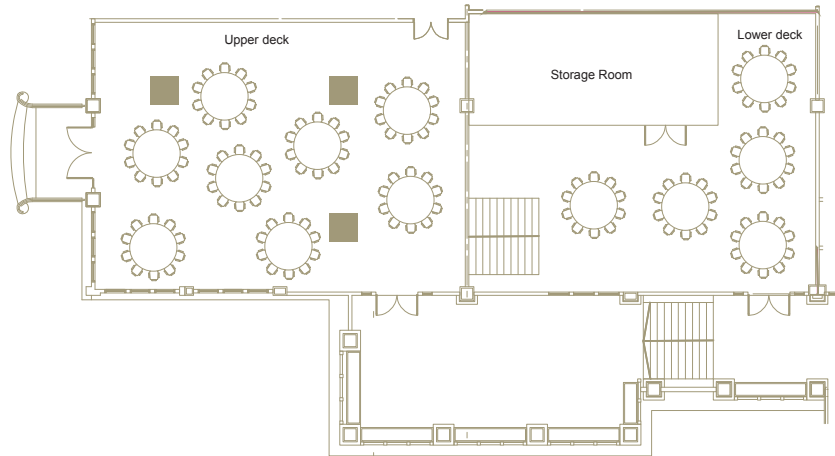


THE GALLERY

MAIN LOBBY, GROUND FLOOR

An intimate space with rustic stone walls comes with two-level floor and an outdoor balcony, which is most suitable for private dining, BBQ concept, birthday party, product launching and many other occasions.

THE GALLERY LAYOUT PLAN



Room Size: 1739.8 sqf - UPPER | 115.8 sqf - LOWER
Ceiling Height: 10.1 ft - UPPER | 9.9 ft - LOWER
Room Dimension: 35.5 x 48.975 ft - UPPER | 30.1 x 44.8 ft - LOWER

AVAILABLE AMENITIES:
FREE WIFI | PARKING SPACE | BUGGY SERVICE | DAY LIGHT

| ROOM SETUP BUILD UP AREA | CAPACITY |
|-----------------------------|--------------------------|
| BANQUET | 80 - UPPER 60 - LOWER |
| COCKTAIL | 120 |
| CLASSROOM | 60 |
| THEATRE | 100 |
| U-SHAPE | 30 |
| BOARDROOM | 30 |
| WORKSHOP | 40 |

**NOTE: THE CAPACITIES ABOVE DO NOT
INCLUDE STAGE AND BUFFET LINE.**

| DURATION | RATE (RM) |
|-----------------------|-----------|
| HALF DAY (4 HOURS) | 1,500 |
| FULL DAY (8 HOURS) | 3,000 |
| PER HOUR | 500 |

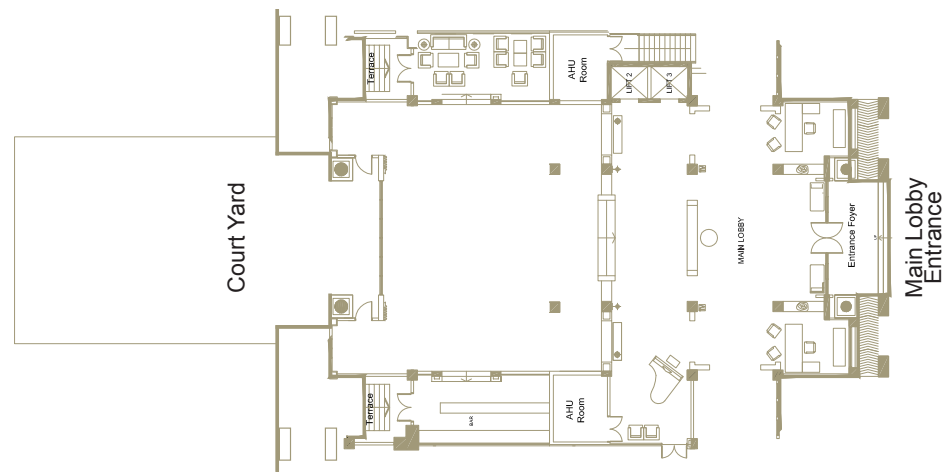
PIANO LOUNGE (COURTYARD)

MAIN LOBBY, GROUND FLOOR

Piano Lounge offers a cosy ambiance with abundance of natural light and amazing golf course view. It is an ideal venue for afternoon tea, celebration, social gathering, wedding ceremony cum receptions. Offering an unique outdoor experience with the greenery scene to enhance the overall occasion, the Courtyard is also an excellent venue for wedding ceremony cum reception as well as cocktail party, making it a truly memorable event for all.



PIANO LOUNGE (COURTYARD)
LAYOUT PLAN



Room Size: 4090.6 sqf
Ceiling Height: 27.4 ft
Room Dimension: 48.1 x 85 ft

AVAILABLE AMENITIES:
FREE WIFI | PARKING SPACE | BUGGY SERVICE | DAY LIGHT

| ROOM SETUP BUILD UP AREA | CAPACITY |
|-----------------------------|----------|
| BANQUET | 80 |
| COCKTAIL | 60 |
| THEATRE | 60 |

NOTE: THE CAPACITIES ABOVE DO NOT
INCLUDE STAGE AND BUFFET LINE.

| DURATION | RATE (RM) |
|-----------------------|-----------|
| HALF DAY (4 HOURS) | 5,000 |
| FULL DAY (8 HOURS) | 9,000 |
| PER HOUR | 1,350 |

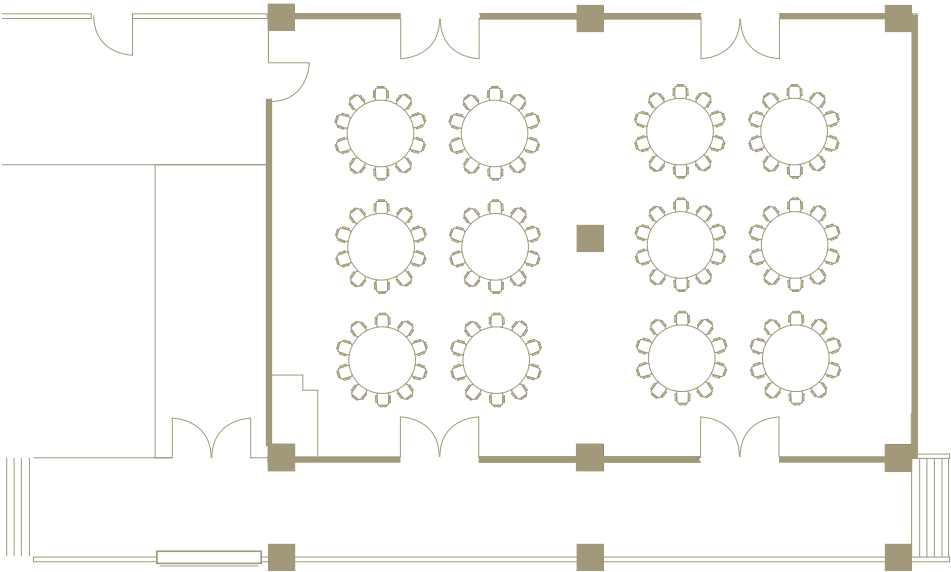


TOURNAMENT ROOM

WEST LOBBY, GROUND FLOOR

Overlooking the Olympic-size swimming pool has definitely set this venue to become one of the top picks for dinner, birthday party, get-together and BBQ Dinner. It offers an intimate seating setup with natural sunlight, which is also perfect for leisure and business event.

TOURNAMENT ROOM
LAYOUT PLAN



Room Size: 2677 sqf
Ceiling Height: 11.3 ft
Room Dimension: 52.1 x 51.3 ft

AVAILABLE AMENITIES:
FREE WIFI | PARKING SPACE | BUGGY SERVICE | DAY LIGHT

| ROOM SETUP BUILD UP AREA | CAPACITY |
|-----------------------------|----------|
| BANQUET | 120 |
| COCKTAIL | 120 |
| CLASSROOM | 60 |
| THEATRE | 120 |
| U-SHAPE | 30 |
| BOARDROOM | 30 |
| WORKSHOP | 50 |

NOTE: THE CAPACITIES ABOVE DO NOT
INCLUDE STAGE AND BUFFET LINE.

| DURATION | RATE (RM) |
|-----------------------|-----------|
| HALF DAY (4 HOURS) | 1,500 |
| FULL DAY (8 HOURS) | 3,000 |
| PER HOUR | 500 |

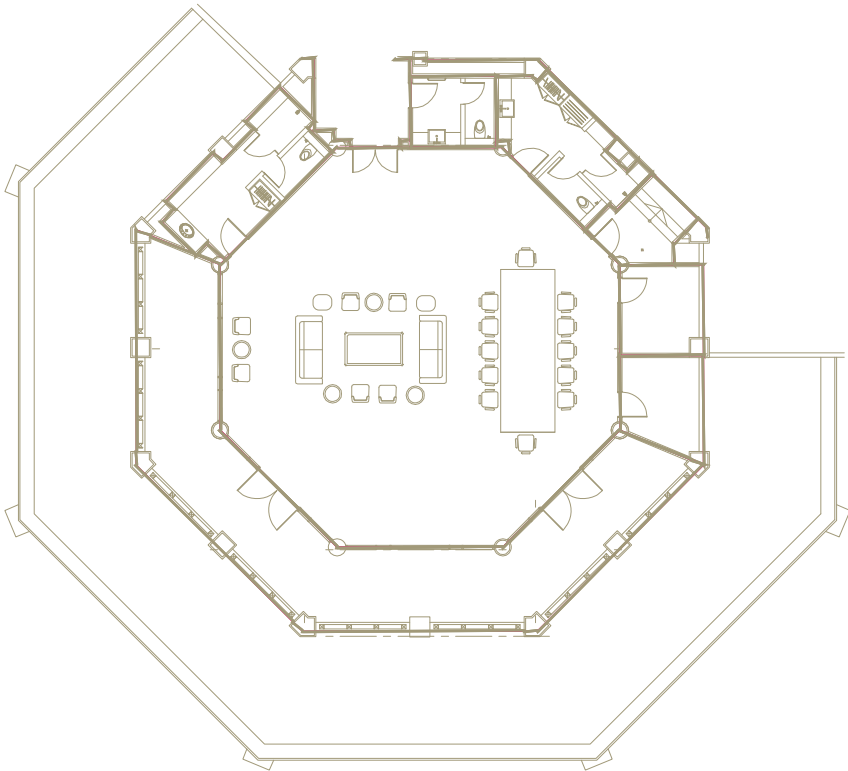
VIP LOUNGE

WEST LOBBY, FIRST FLOOR

Be it an intimate or grand occasion, the exclusivity of the venue will give you extra privacy with own amenities and balcony overlooking the golf course view. Perfect for private event, business discussion and social gathering.



VIP LOUNGE
LAYOUT PLAN



Room Size: 2126.7 sqf
Ceiling Height: 9.8 ft
Room Dimension: 45.5 x 46.6 ft

| CAPACITY (EXISTING SETUP) | |
|------------------------------|--|
| 30 | |

| DURATION | RATE (RM) |
|-----------------------|-----------|
| HALF DAY (4 HOURS) | 1,500 |
| FULL DAY (8 HOURS) | 3,000 |
| PER HOUR | 500 |

AVAILABLE AMENITIES:
FREE WIFI | PARKING SPACE | BUGGY SERVICE | DAY LIGHT



BOWLING CENTRE

WEST LOBBY, LOWER GROUND FLOOR

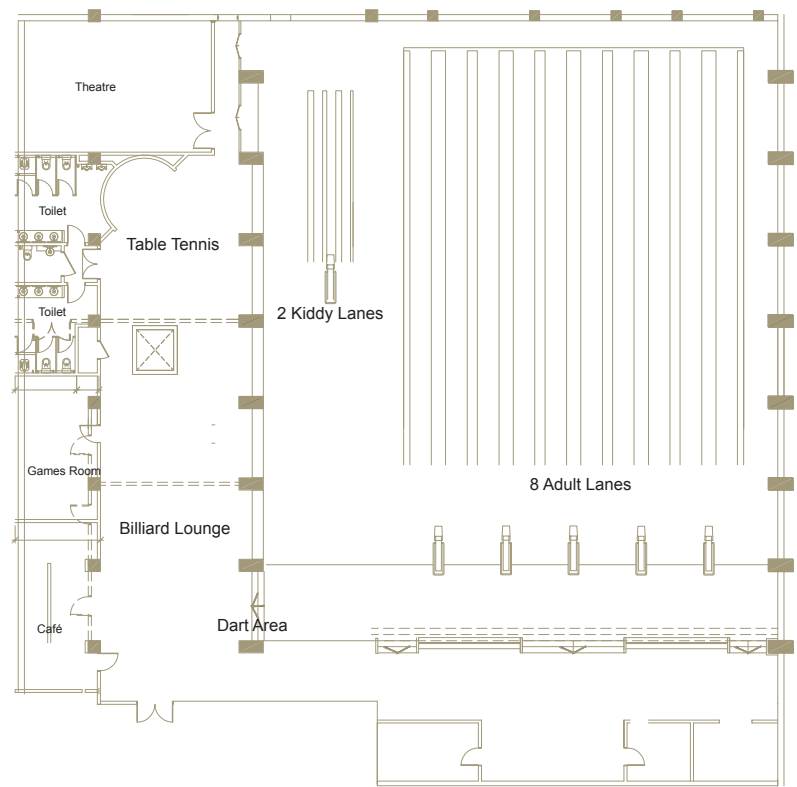
An ideal entertainment space for families and corporate gathering where you can unwind and have some jolly good time at the Club.

Our bowling centre is equipped with eight lanes dedicated for adult and two mini lanes for kids.

From a fun bowling game , pool table, game rooms to a private mini theatre, there is everything for everyone here.



BOWLING CENTRE
LAYOUT PLAN



Room Size: 1,759.2 sqf
Ceiling Height: 9.8 ft
Room Dimension: 20x 87.9 ft

| CAPACITY (EXISTING SETUP) |
|------------------------------|
| 48 |

| RATE (RM) (PER 4 HOURS EVENT) |
|----------------------------------|
| 2,000 |

DRINK HUT

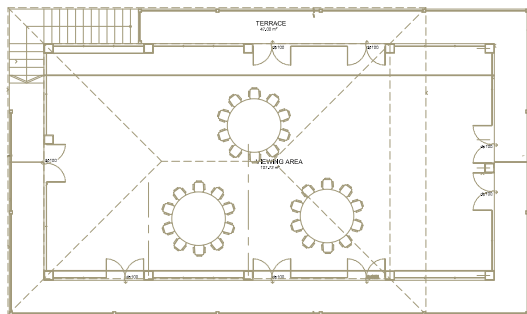
GOLF COURSE

Surrounded by the beautiful golf course view, this is the perfect venue for a private and intimate event with abundance of natural sunlight setting fit for a smaller crowd. Suitable for any type of celebration from parties, corporate launches, social gathering and more.



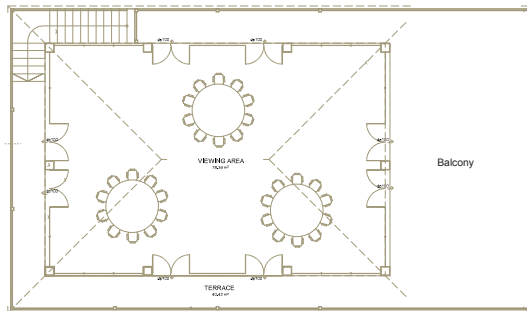
DRINK HUT LAYOUT PLAN

DRINK HUT 1



DRINK HUT 1
Room Size: 1805.4sqf
Ceiling Height: 8.8 ft
Room Dimension:
32.5 x 55.4 ft

DRINK HUT 2



DRINK HUT 2
Room Size: 1281.9sqf
Ceiling Height: 8.5 ft
Room Dimension:
32.1 x 39.8 ft
Balcony dimension: 27 x 18 ft
Balcony size: 486 sqf

AVAILABLE AMENITIES:
PARKING SPACE | BUGGY SERVICE | DAY LIGHT

| ROOM SETUP BUILD UP AREA | CAPACITY |
|-----------------------------|----------|
| BANQUET | 30 |
| COCKTAIL | 40 |
| CLASSROOM | 30 |
| THEATRE | 50 |
| U-SHAPE | 25 |
| BOARDROOM | 25 |
| WORKSHOP | 30 |

NOTE: THE CAPACITIES ABOVE DO NOT
INCLUDE BUFFET LINE.

| DURATION | RATE (RM) |
|-----------------------|-----------|
| HALF DAY (4 HOURS) | 1,000 |
| FULL DAY (8 HOURS) | 2,000 |
| PER HOUR | 300 |



#KLGCC, COURTYARD



#KLGCC, COURTYARD



#KLGCC, THE GALLERY



#KLGCC, FUNCTION ROOM



#SDCC, GRAND BALLROOM



#SDCC, GRAND BALLROOM



#SDCC, ROOF GARDEN - DINING



#SDCC, ROOF GARDEN - BOARDROOM

KUALA LUMPUR GOLF & COUNTRY CLUB

199001005014 (196581-V)

10, Jalan 1/70D Off Jalan Bukit Kiara, 60000 Kuala Lumpur



Kuala Lumpur Golf & Country Club



klgcc.official



klgcc.com

SIME DARBY CONVENTION CENTRE

198401003579 (116098-A)

1A, Jalan Bukit Kiara 1, Bukit Kiara, 60000 Kuala Lumpur



Sime Darby Convention Centre



simedarbyconventioncentre

**For more information and booking details,
please call 03-2011 9188 ext 183
eventsales@simedarbyproperty.com**