
PRESS RELEASE



BATTERSEA POWER STATION OPENS ITS DOORS TO THE PUBLIC FOR THE FIRST TIME IN HISTORY TODAY

- World-renowned landmark, Battersea Power Station, opens to the public today following a transformational eight-year restoration, alongside a new pedestrianised high street, Electric Boulevard
- Visitors can explore the Power Station's historic Turbine Halls and check out the first tranche of retailers opening, including Nike, Uniqlo, Mulberry, Hugo Boss, Theory, Mango, Battersea Bookshop, a new neighbourhood bookstore from Stanfords, and many more
- A free five-day 'Festival of Power' will run between Friday 14th – Sunday 16th October and Saturday 22nd – Sunday 23rd October, with family friendly activities and performances to celebrate the opening of the London landmark

Under Embargo until 0:01 14th October 2022



Caption: Battersea Power Station lit up for its grand public opening. Credit: Charlie Round-Turner

Nearly forty years after the lights were switched off at one of London's best loved landmarks, Battersea Power Station opens today, **Friday 14th October**, marking the first time the public

can explore this iconic architectural masterpiece and enjoy the first of its unique shops, bars, restaurants and leisure venues.

Electric Boulevard, a new pedestrianised high street, that runs between Gehry Partners' Prospect Place and Foster + Partners' Battersea Roof Gardens to the riverside neighbourhood's Zone 1 London Underground Station, also opens today.

An official countdown to the opening of the Grade II* listed Power Station will take place in **Malaysia Square**, a public square to the south of the Grade II* listed Power Station, accompanied by a performance from the Battersea Power Station Community Choir.

From **Friday 14th to Sunday 16th October**, and continuing **Saturday 22nd and Sunday 23rd October**, a free, five-day '**Festival of Power**' will be on, with a programme of live performances, family friendly activities, installations and more to celebrate the historic milestone. Headlining the festival is Arcadia's Lords of Lightning, a duelling spectacle involving multi-million volt bolts being fired between the two 'Lords', hosted in the six-acre Power Station Park on the evening of **Friday 14th October** from **7pm**.

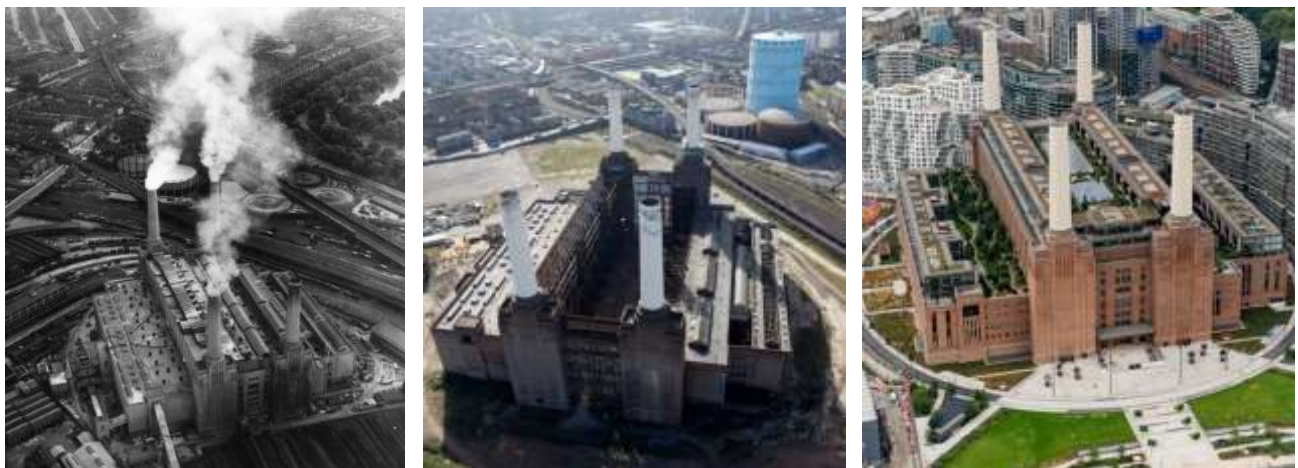
Other highlights include a unique and interactive heritage trail act which nods to the history and cultural significance of the Power Station, as well as performances from drummers and various forms of entertainment including walkabout performers, acrobats and brand activations.

Visitors will be able to discover the Power Station's Turbine Halls, which have been meticulously restored back to their former glory and transformed into one-of-a-kind retail and leisure destination. British and international brands opening new stores today include **Nike, Mulberry, Theory, Lacoste, Ralph Lauren, Aesop, Space NK, Hugo Boss, Jo Malone London, Uniqlo** and **Mango**. A new neighbourhood bookstore, **Battersea Bookshop**, from specialist bookseller Stanfords, and **Curated Makers** will host more than 40 local independent small businesses selling homeware, candles, clothing, artwork and more will also be opening within the Power Station. Further brands will open through 2022 and 2023.

Eateries opening inside the Power Station include **Le Bab, Where The Pancakes Are, Poke House, Clean Kitchen Club** and **Paris Baguette** to name a few. Inception Group, London's most experiential hospitality company, is also opening an exciting new bar concept, **Control Room B**, in one of the original control rooms. The immersive experience is completely unique with cocktails inspired by the Grade II* listed building's iconic architecture and history, transporting guests back to the 1950s when the second half of the Power Station was built.

The Boiler House at the heart of the Grade II* listed building will be home to the recently announced 24,000 sq. ft **Arcade Food Hall** from JKS Restaurants, which will open in 2023.

Electric Boulevard, a new high street to the south of the Power Station, also opens today with the likes of high street favourite, **ZARA** and **ZARA Home**, opticians and eyewear specialists, **David Clulow**, and Korean food and culture hub, **Oseyo**. A new-concept **M&S Foodhall** will follow shortly along with the UK's first **art'otel**, a 164 room hotel with a Michelin starred chef, Henrique Sa Pessoa, running its new restaurant, **JOIA**.



Caption: Following an eight-year restorative and transformational development, the Grade II Listed Power Station opens to the public today. The first shops also open on Electric Boulevard, a new pedestrianised high street at Battersea Power Station. Credit (far right image): Backdrop Productions*

Work began on Battersea Power Station in 1929 and the first power was generated in 1933, initially from just one Turbine Hall with two chimneys. As the need for electricity grew in London, Battersea Power Station expanded, with Turbine Hall B powering up in 1944 and the fourth and final chimney completing in 1955. At its peak, Battersea Power Station supplied a fifth of London's electricity, including to such prestigious buildings as Buckingham Palace and Houses of Parliament. The building was decommissioned in 1983 and during the years that followed, several failed attempts were made to redevelop the site.

Since 2012, the Power Station and its 42-acre surrounding site has been under the custodianship of the current shareholders, Sime Darby Property, S P Setia and the Employees' Provident Fund (EPF), who have overseen the painstaking restoration of the building. In 2019, Permodalan Nasional Berhad (PNB) and EPF became the long-term owners of the Power Station securing the future of the landmark for many generations.

Earlier this week, The King and Queen of Malaysia visited Battersea Power Station to officiate the opening ceremony and unveiled a plaque to mark this historic moment.

Investment Minister, Lord Johnson, said:

"Battersea Power Station is a shining example of the positive power of foreign investment. The £5bn investment to date by the Malaysian Consortium has not only helped regenerate an iconic London landmark but also massively improved transport connections in Wandsworth.

"Most importantly, the development created thousands of local jobs, across construction, retail and hospitality. It's a real testament to our thriving trade and investment partnership with Malaysia and the importance of trade for creating jobs and driving growth."

The Mayor of London, Sadiq Khan said:

"As a lifelong South Londoner, I am particularly delighted to see the iconic Battersea Power Station opening its doors for the first time in forty years as a new addition to London's thriving shopping and entertainment landscape

"This redevelopment of a 20th Century London landmark has already helped to deliver new investment, vital transport links and jobs for local people. Battersea Power Station will now breathe new life into this part of London – attracting more investment and boosting our economy as we build a better London for everyone."

Dato' Jagan Sabapathy, Chairman of Battersea Project Holding Company, said:

"The opening of Battersea Power Station is a turning point for this riverside neighbourhood and the pinnacle of ten years of hard work and dedication. Re-opening this prestigious building, which means so much to Londoners and the world, demonstrates what can be achieved by the Malaysian people, working collaboratively with partners from across the world, to deliver inspirational projects. This achievement is something for our whole country to be proud of, and I hope many will come to visit."

Simon Murphy, Chief Executive Officer at Battersea Power Station Development Company, said:

"Today marks a historic and hugely celebratory moment as we open Battersea Power Station and Electric Boulevard to the public. Many said it was impossible, several tried and failed, however through the commitment of our shareholders and with the support of many Public and Private sector stakeholders in the UK, we've succeeded in bringing Battersea Power Station back to life so that it can be enjoyed for generations to come. This opening is a fantastic boost for the local economy, creating over 2,500 jobs through the many shops, restaurants, offices and leisure venues opening here, as well as providing a new destination for London."

"We are truly thrilled to welcome the local community, Londoners and visitors from across the globe to come and explore this Grade II listed landmark that many have marvelled at from afar for years. Now, for the first time, everybody can walk inside, interact with the magnificent architecture and experience all that the reborn Battersea Power Station has to offer."*

Emily Gee, Historic England Regional Director, said:

"We are delighted that the Grade II listed Battersea Power Station, one of London's most recognised and cherished landmarks, is opening its doors to the public. The sheer scale and condition of the Power Station presented major challenges to its repair and reuse. But through years of dedication and partnership working, together we have ensured that the building's major conservation needs have been met. This transformational redevelopment has secured a bright future for the building, with exciting uses that bring the public inside for the first time and show the power of our industrial heritage and its potential for regeneration."*

The opening of Battersea Power Station and Electric Boulevard extends this already well-established neighbourhood, from the 20-plus shops, restaurants and bars that have been open in Circus West Village since 2017, and over 2,000 residents who live across Circus West Village, the Power Station, Gehry Partners' Prospect Place and Foster + Partner's Battersea Roof Gardens.

With the Northern Line extended to give this new riverside neighbourhood its very own Zone 1 London Underground station, Battersea Power Station is within 15 minutes of the West End and the City. Battersea Power Station is also easily accessible via the Uber Boat by Thames Clippers river bus service, bike, train and on foot.

For more information, please visit www.batterseapowerstation.co.uk and follow @BatterseaPwrStn to keep up to date with the latest news and events.

For media enquiries, please contact:

Press Office, Battersea Power Station Development Company

T: +44 (0) 20 7062 1870

E: pressoffice@bpsdc.co.uk

Notes to editors:

About Battersea Power Station:

- Battersea Power Station is one of central London's largest, most visionary and eagerly anticipated new riverside neighbourhoods. The £9bn regeneration project is seeing the creation of a vibrant, mixed-use destination offering a community of homes, shops, restaurants, offices, culture and leisure venues, as well as 19 acres of public space, all serviced by an extension to the London Underground Northern Line.
- The Battersea Power Station project covers 42 acres and includes 3.5m sq ft of mixed commercial space, together with over 4,000 new homes.
- The successful regeneration of Battersea Power Station will create 17,000 new jobs, generating long term career opportunities for local residents. A new NHS medical facility is also being built.
- Circus West Village, the first chapter of the regeneration of Battersea Power Station, is already a thriving riverside destination and home to over 1,800 people. Offering an eclectic mix of independent and design-led bars, restaurants, shops, fitness and wellbeing facilities, a cinema, a theatre and an ongoing events programme, this neighbourhood welcomes over three million people on average per year.
- The Grade II* listed Power Station, the second phase of the development, houses over 100 shops, restaurants and cafes, event venues, a unique chimney lift experience offering 360-degree panoramic views of London's skyline, new office space and 254 new residential apartments. The building opened on 14th October 2022.
- With the recently opened Zone 1 Battersea Power Station Underground station on the Northern Line Extension, the development is only a 15 minute journey from the West End and the City. It also has its very own Uber Boat by Thames Clippers pier and is 15 minute journey from Embankment, 20 minutes from Blackfriars, 30 minutes from Putney and 40 minutes from Canary Wharf. Battersea Power Station is easily accessible by bus, bike, car and train too.
- The wider Battersea Power Station development is owned by a consortium of Malaysian investors comprised of S P Setia (40%), Sime Darby Property (40%) and The Employees' Provident Fund (20%), with the commercial assets within the Power Station building now being directly owned by Permodalan Nasional Berhad (PNB) and EPF.